

STAR Inverter & STAR RST Inverter

Wiring diagram **GB**

Elschema **SE**

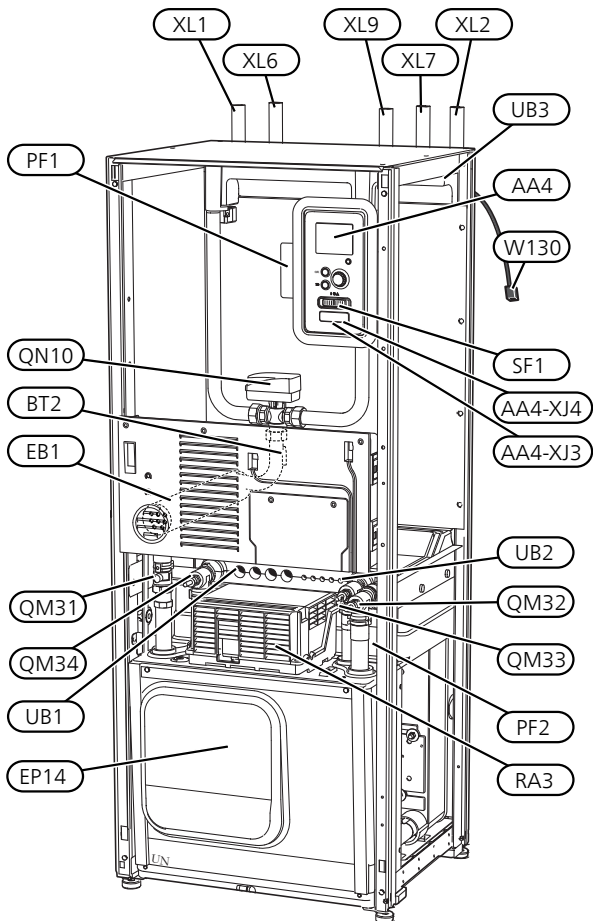
Sähkökytkentäkaavio **FI**

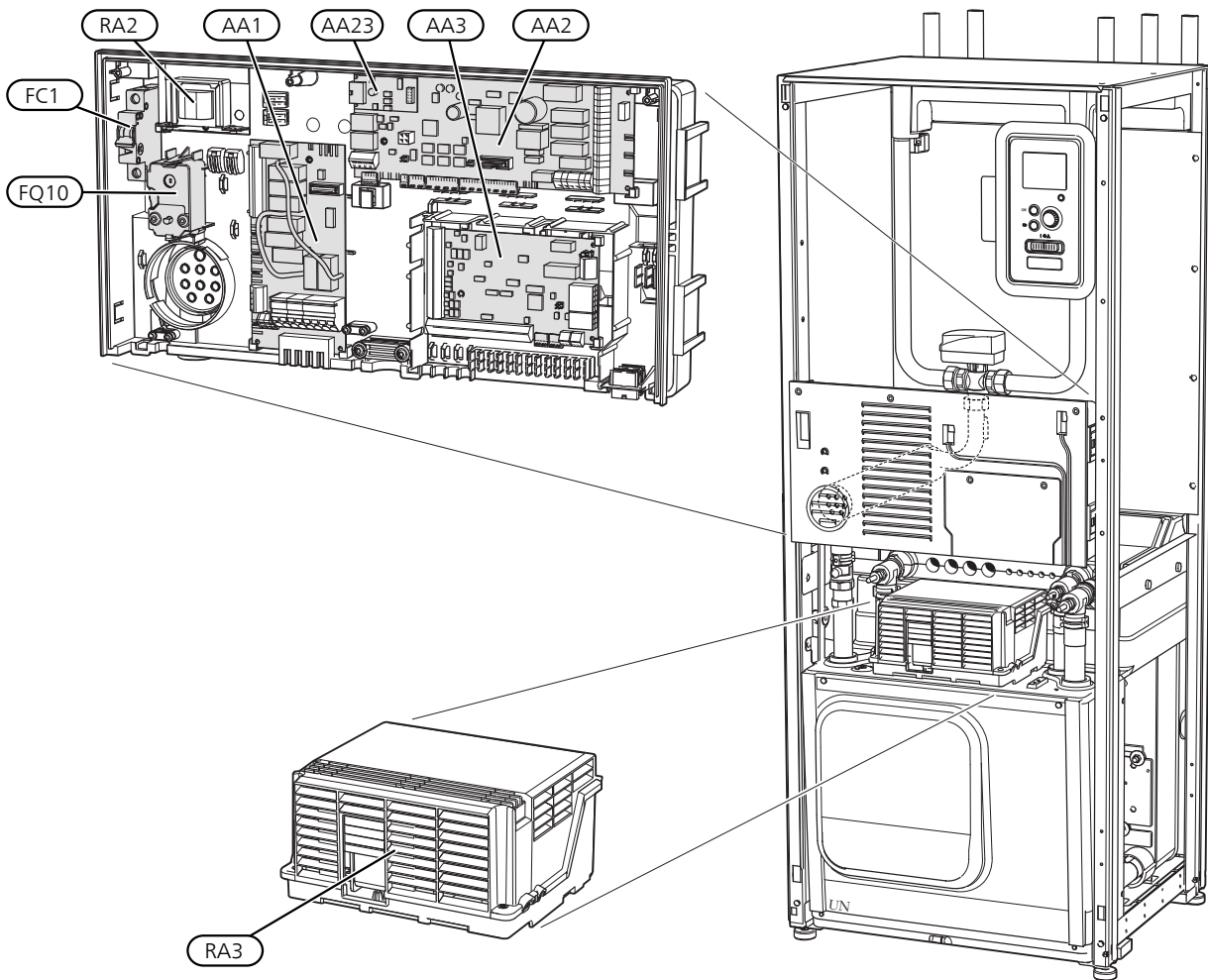
Table of Contents

Component locations – Komponenttien sijainti – Komponentplacering _____	4
Wiring diagram – Sähkökytkentäkaavio – Elsche- man _____	10
Translation table – Käännöstaulukko – Översätt- ningstabell _____	28

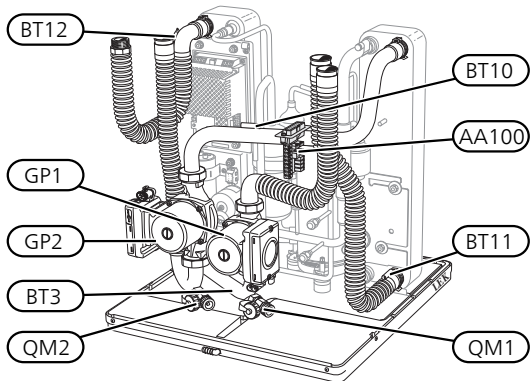
Component locations – Komponenttien sijainti – Komponentplacering

STAR Inverter

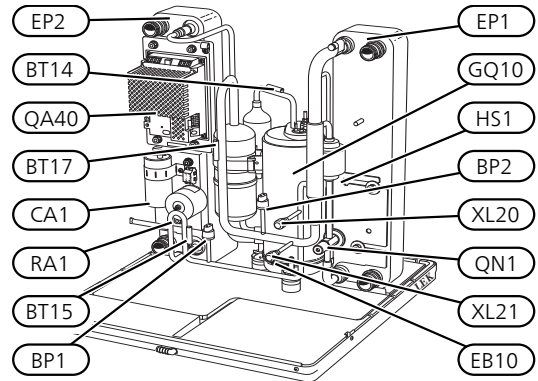




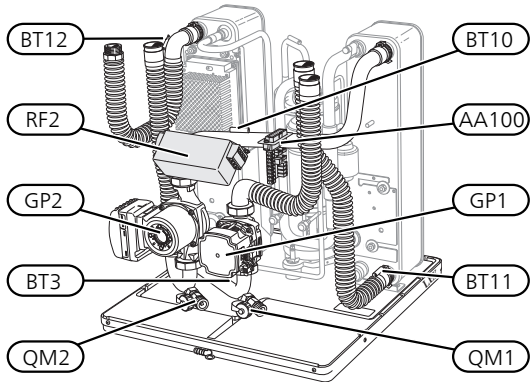
6 kW



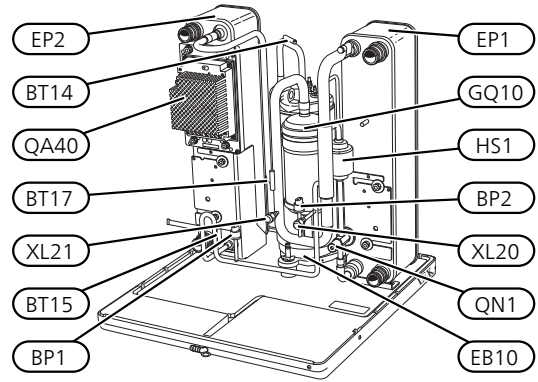
6 kW



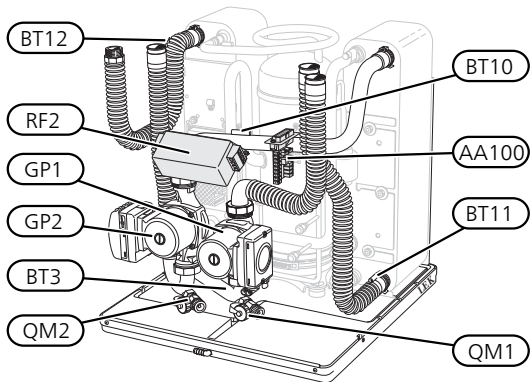
12 kW



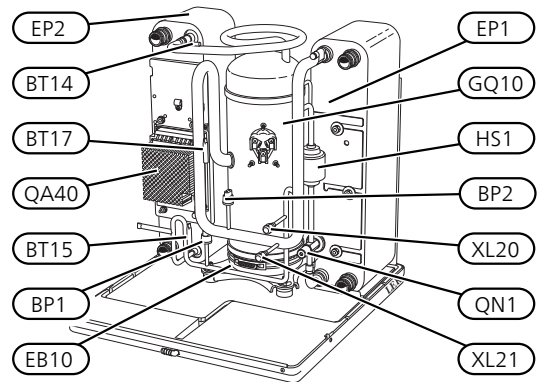
12 kW



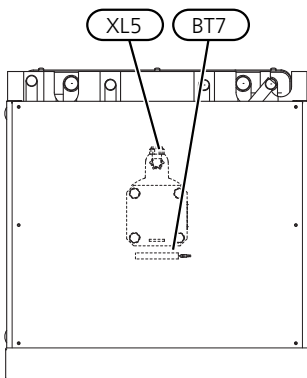
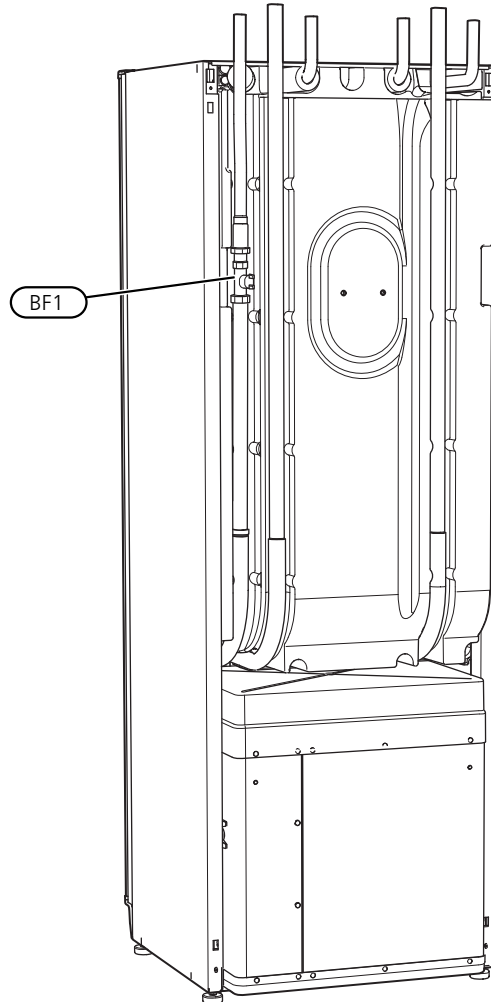
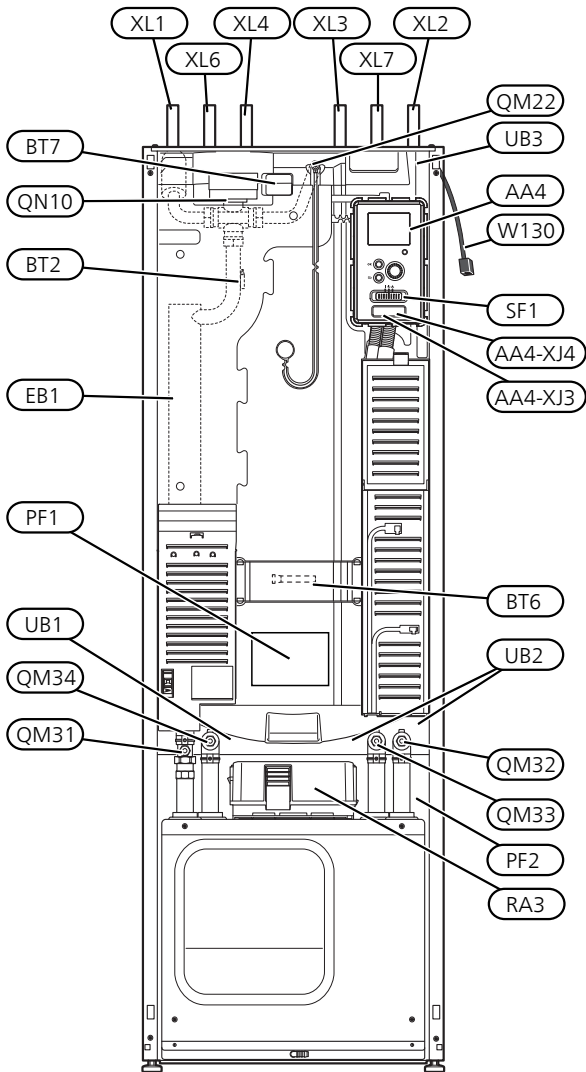
16 kW

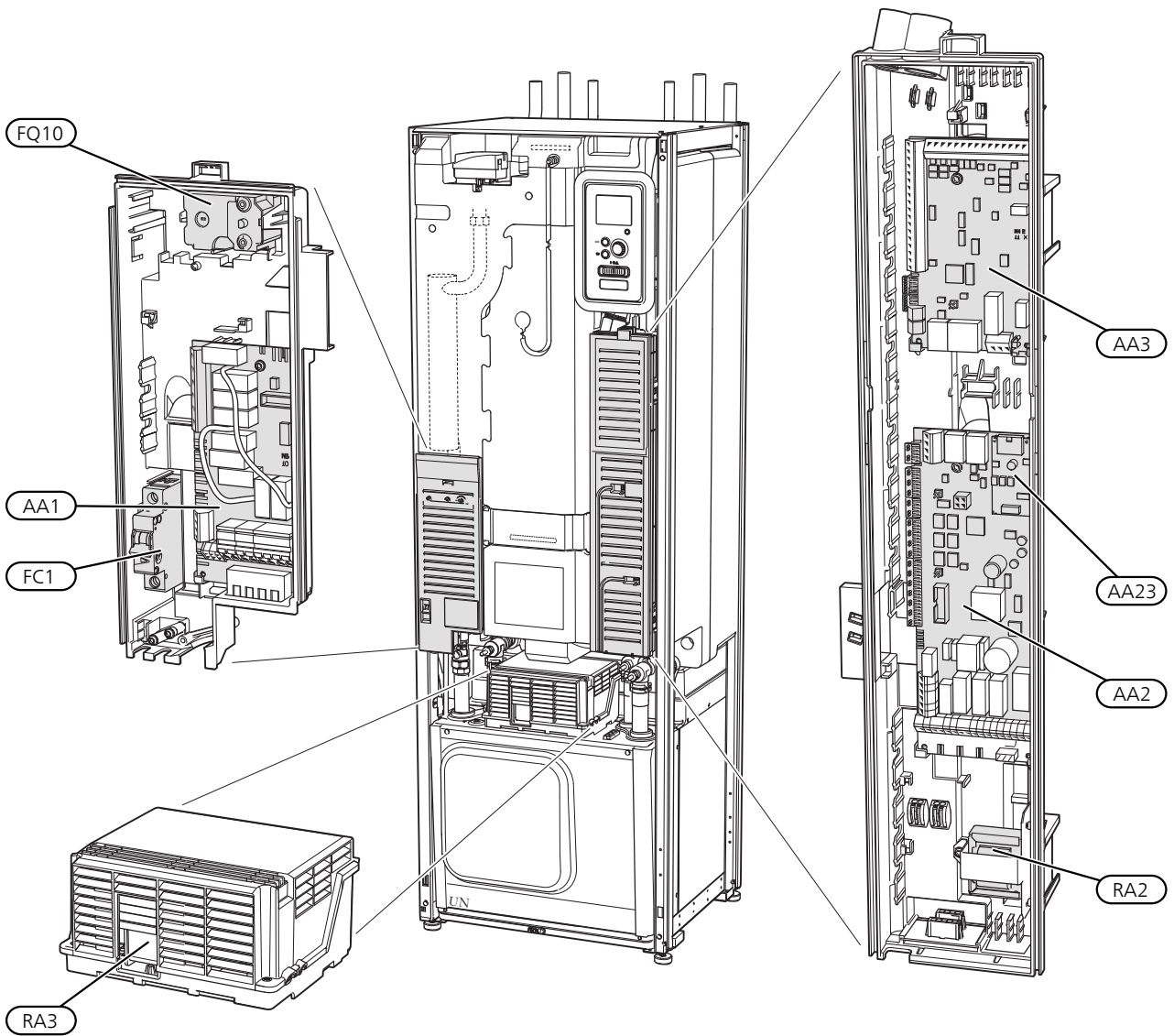


16 kW

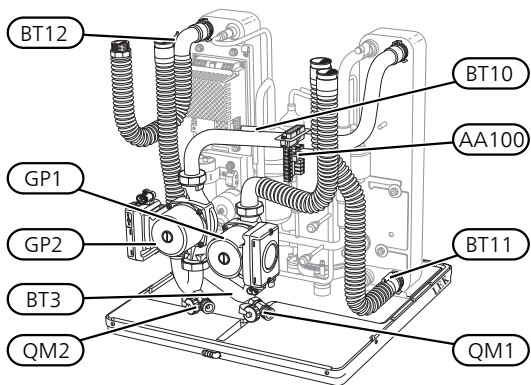


STAR RST Inverter

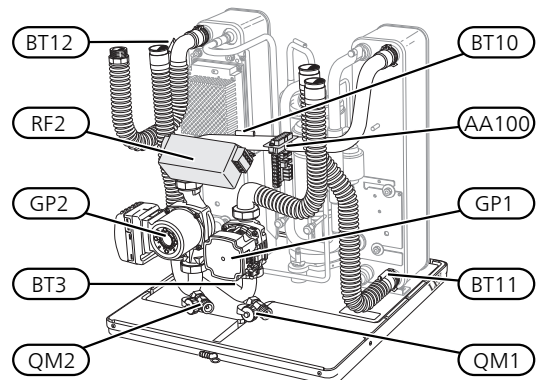




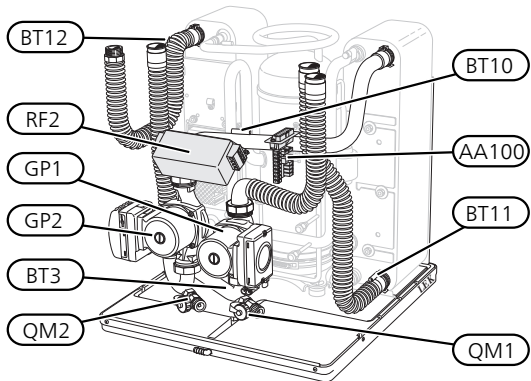
6 kW



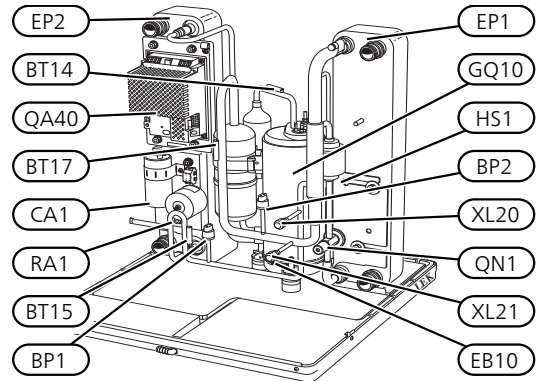
12 kW



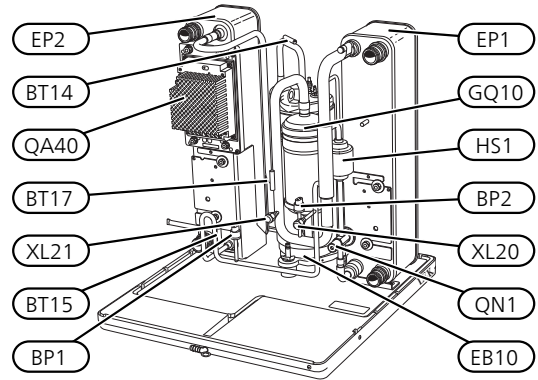
16 kW



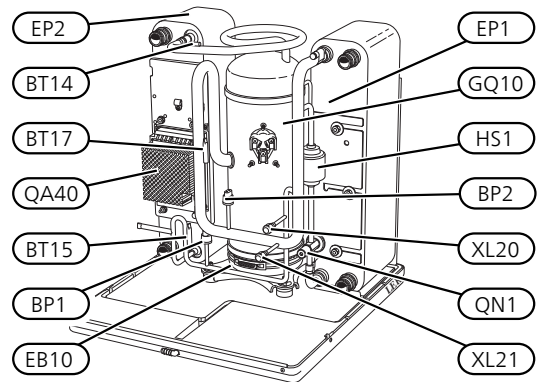
6 kW



12 kW

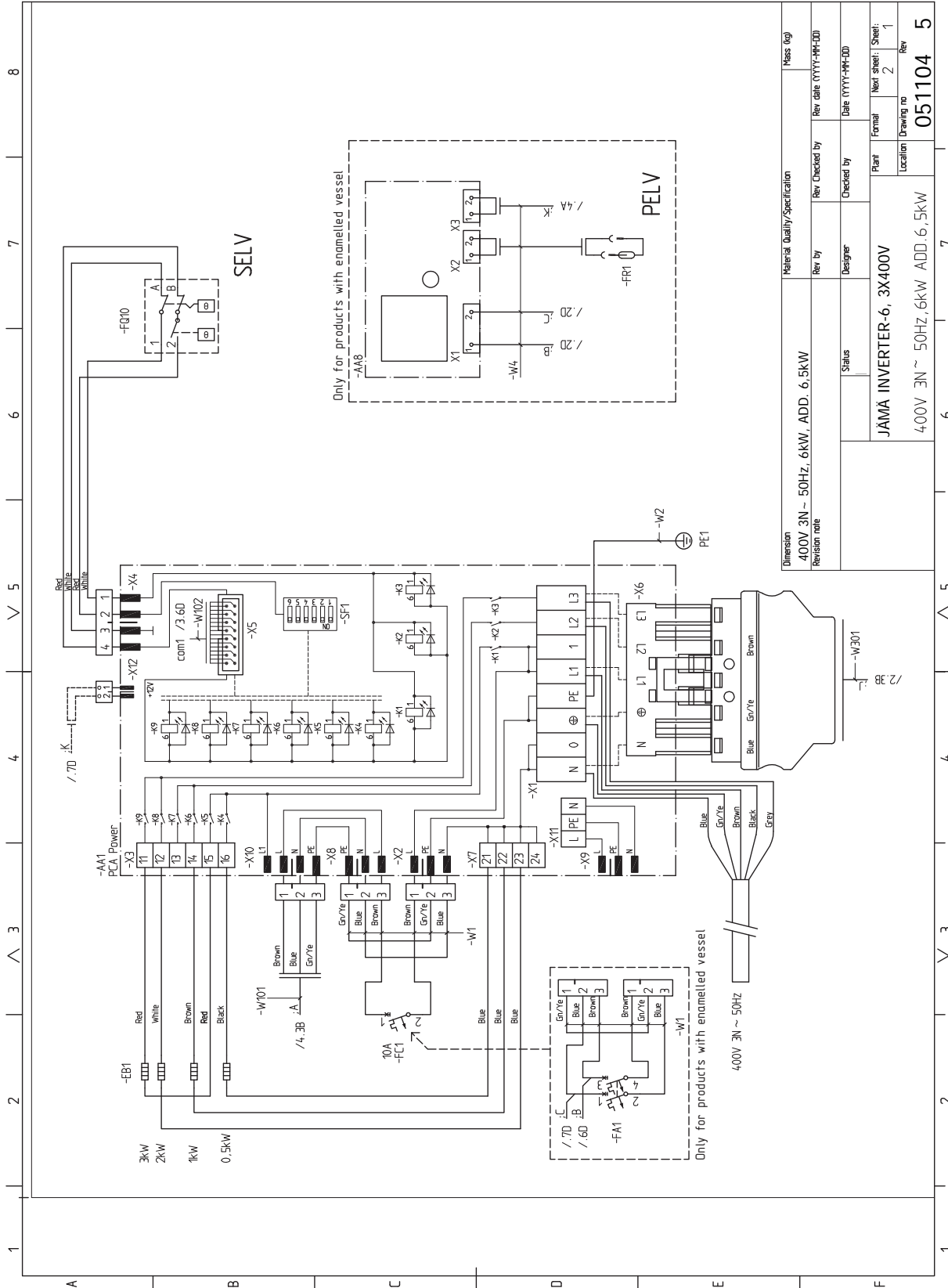


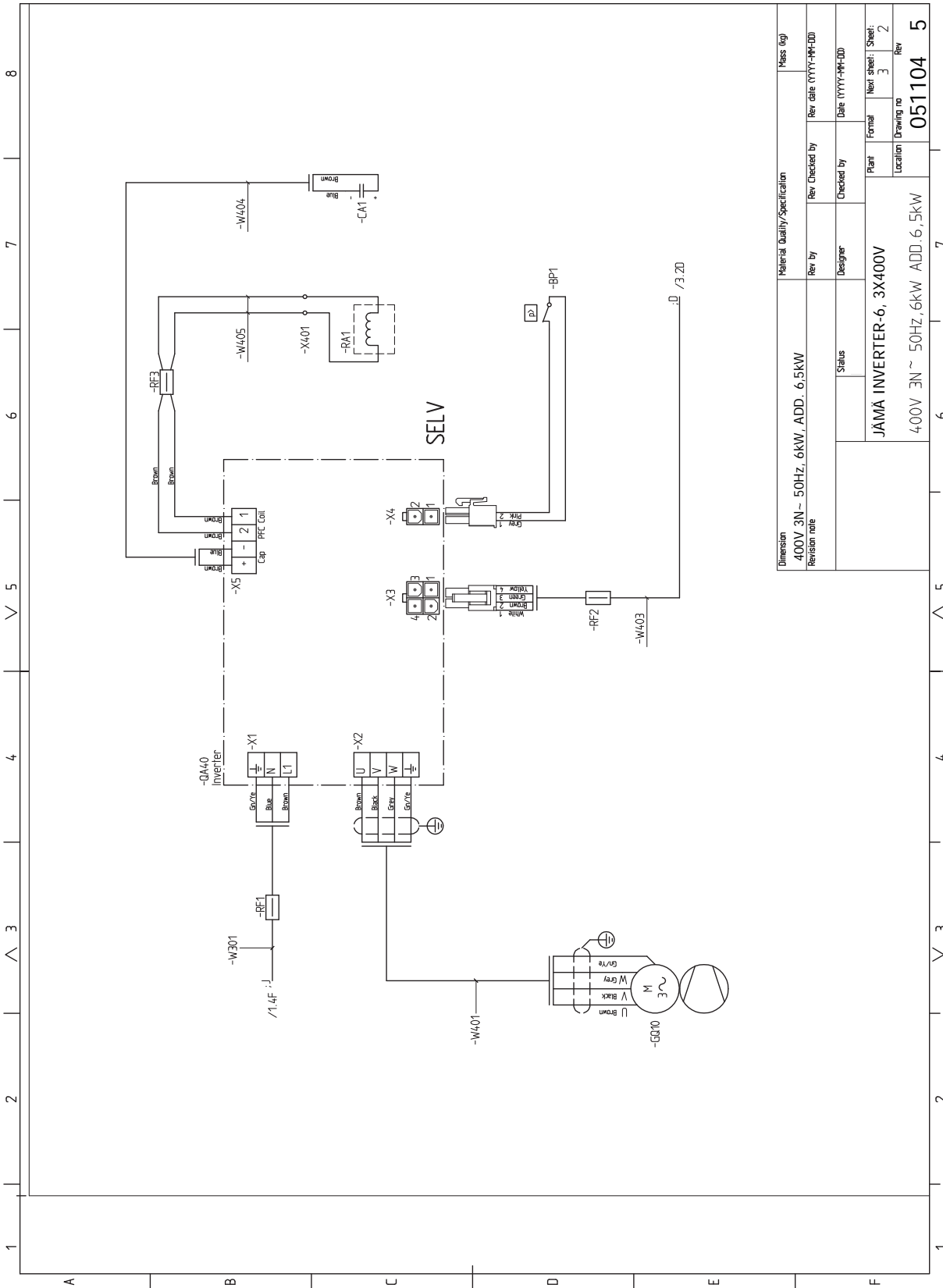
16 kW



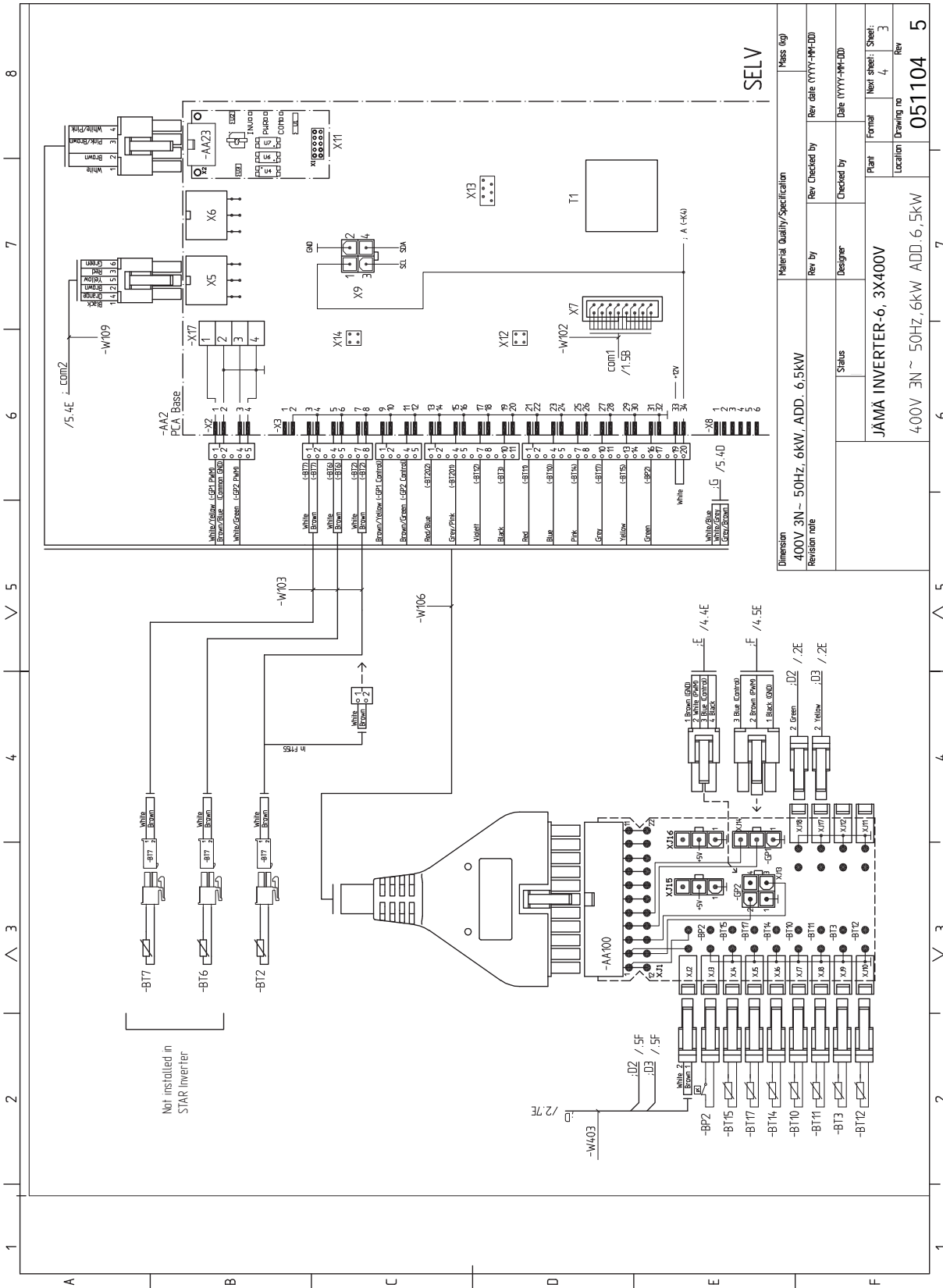
Wiring diagram – Sähkökytkentäkaavio – Elscheman

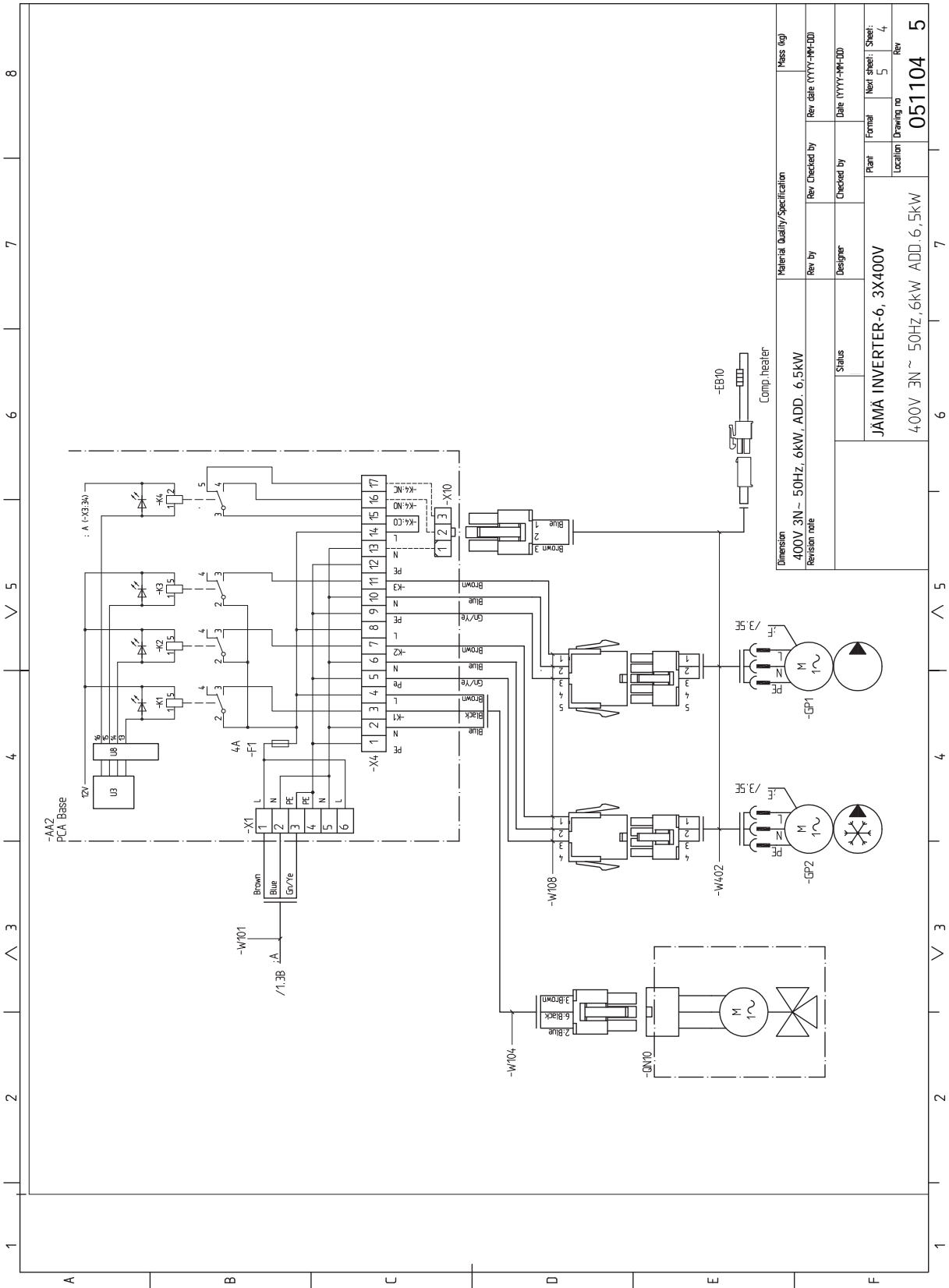
3x400V 6 kW (STAR Inverter/STAR RST Inverter)



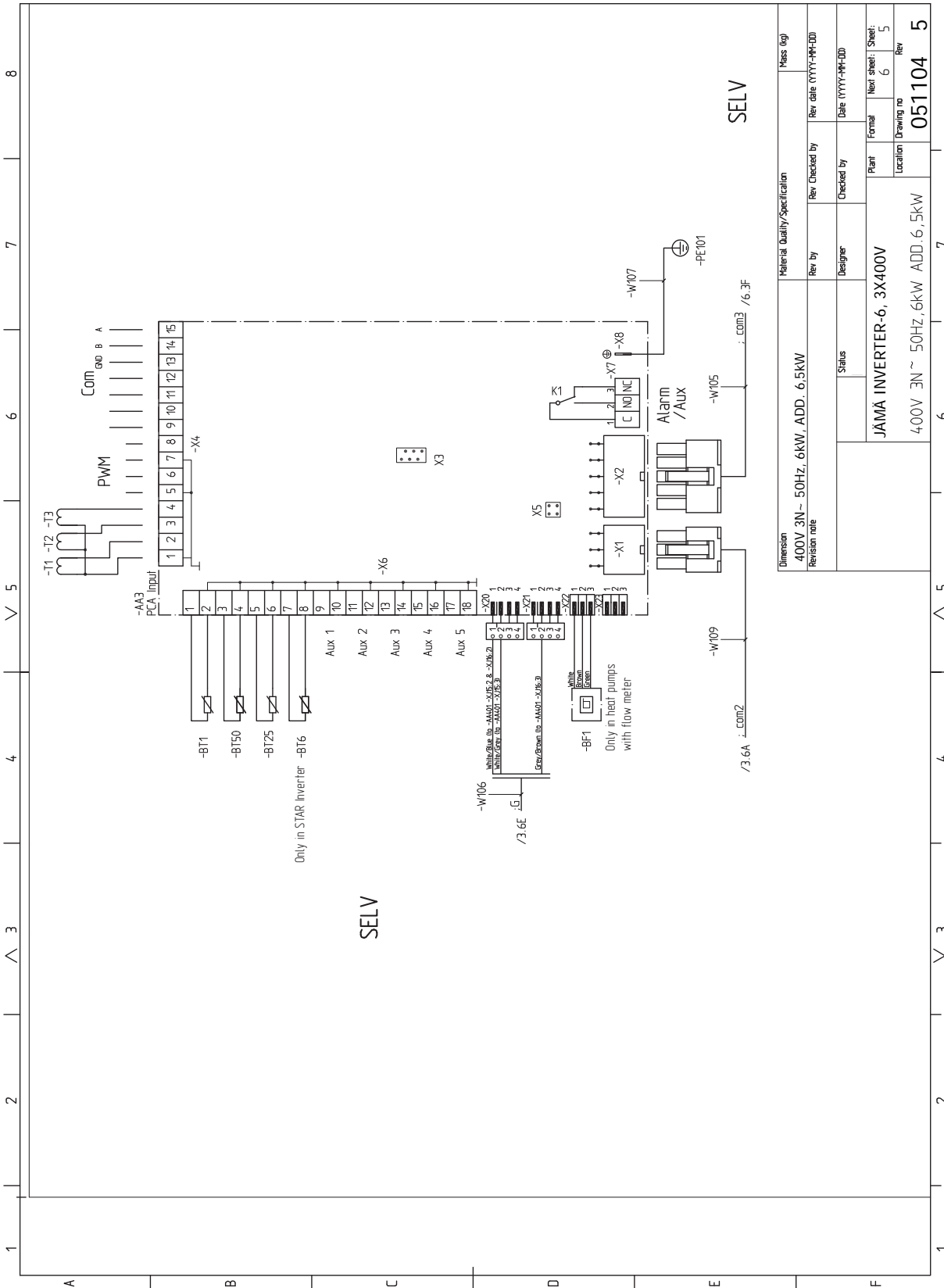


Material Quality/Specification		Mass (kg)	
Dimension	400V 3N ~ 50Hz, 6kW, ADD. 6.5kW	Rev by	Rev date (YYYY-MM-DD)
Revision note		Checked by	Date (YYYY-MM-DD)
Status		Plant	Next sheet: Sheet: 2
		Location	Drawing no
			051104
			5

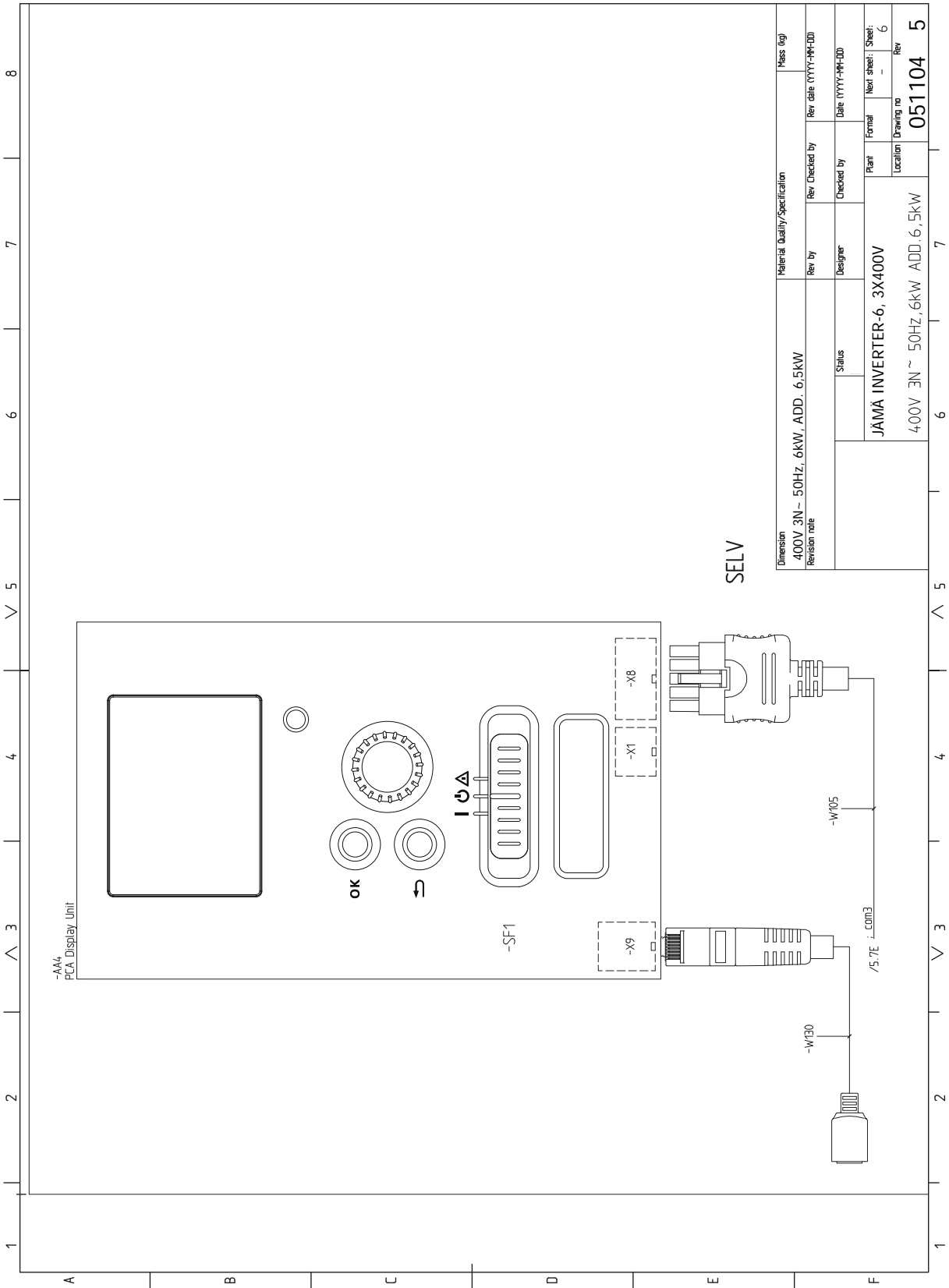




Material Quality/Specification		Mass (kg)	
Rev by	Designer	Rev Checked by	Rev date (YYYY-MM-DD)
Status		Checked by	
JÄMÄ INVERTER-6, 3X400V		Plant	Format
4.00V 3N ~ 50Hz, 6kW ADD. 6,5kW		Location	Next sheet: Sheet: 4
		Drawing no	Rev
		051104	5

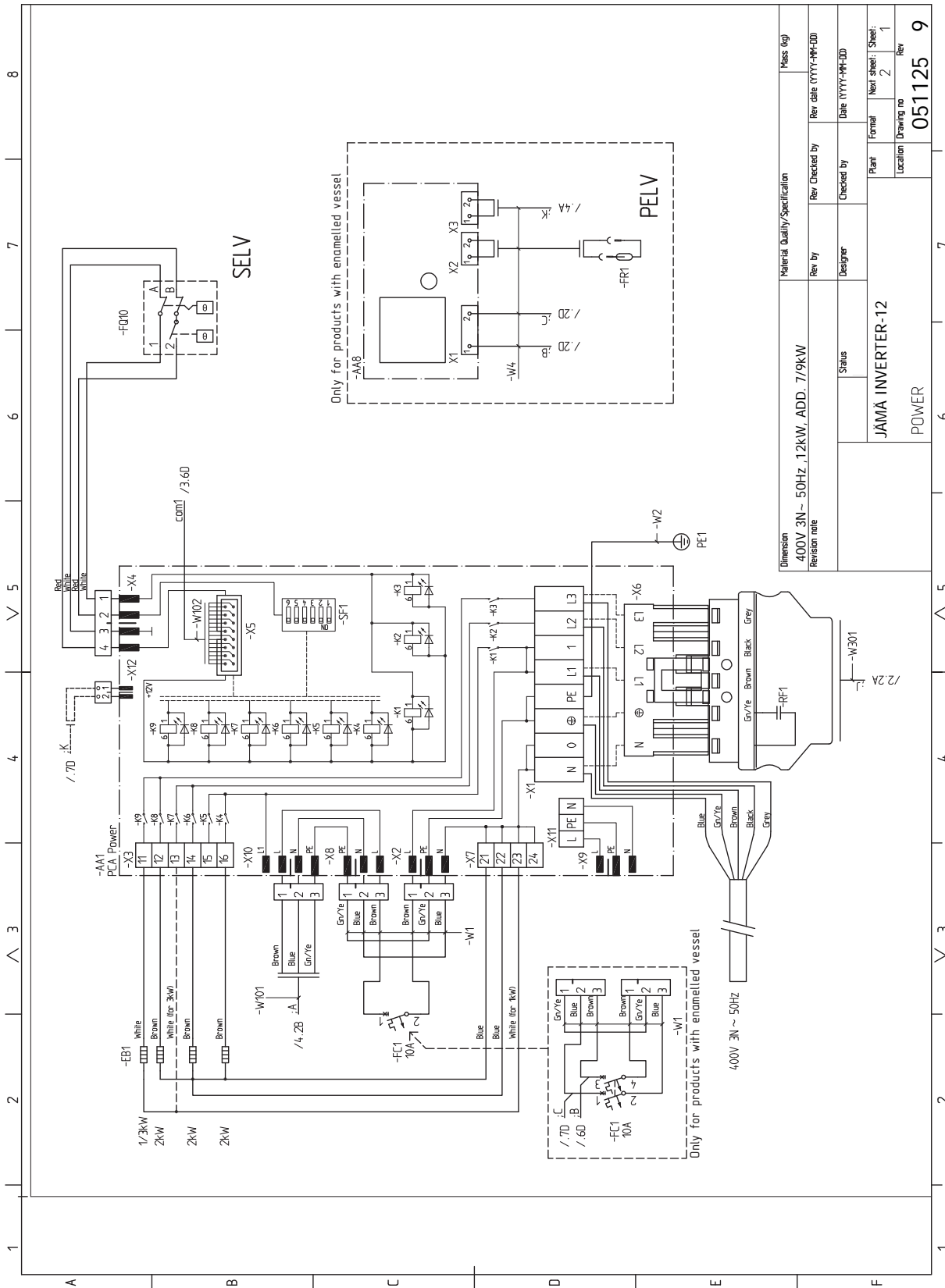


Material Quality/Specification		Mass (kg)
Dimension	400V 3N~ 50Hz, 6kW, ADD. 6,5kW	
Revision note		
Rev by	Designer	Checked by
Rev date	(YYYY-MM-DD)	Date
Plant	JÄMÄ INVERTER-6, 3X400V	Next sheet: Sheet:
Location	400V 3N~ 50Hz, 6kW, ADD. 6,5kW	6
Drawing no	051104	Rev
		5



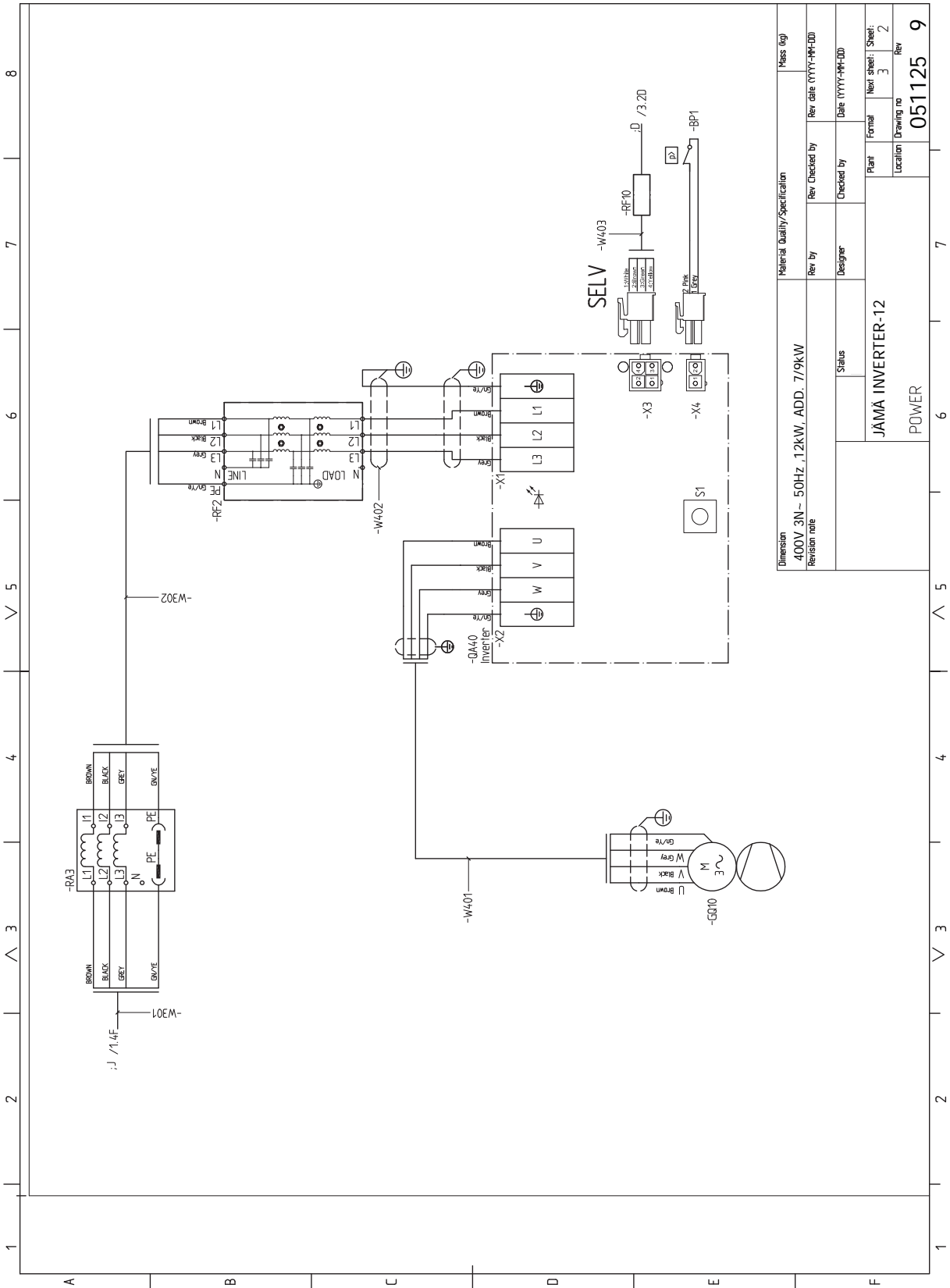
Dimension	Material Quality/Specification		Mass (kg)
400V 3N ~ 50Hz, 6kW, ADD. 6,5kW	Rev by	Rev Checked by	Rev date (YYYY-MM-DD)
Revision note	Designer	Checked by	Date (YYYY-MM-DD)
	Status		Plant
	JÄMÄ INVERTER-6, 3X400V		Next sheet: Sheet: 6
	400V 3N ~ 50Hz, 6kW, ADD. 6,5kW		Location
			Drawing no
			051104
			Rev
			5

3x400V 12 kW (STAR Inverter/STAR RST Inverter)

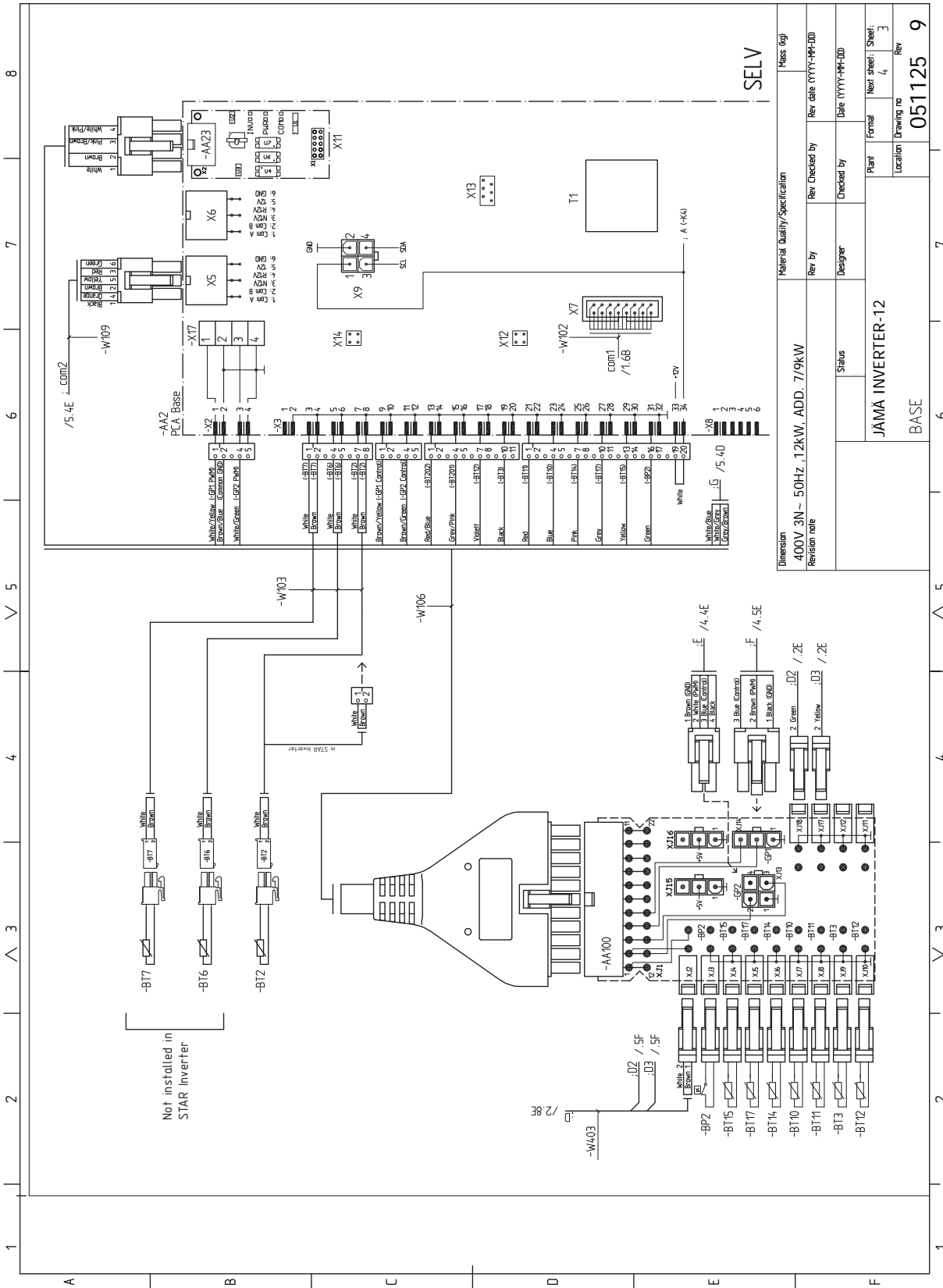


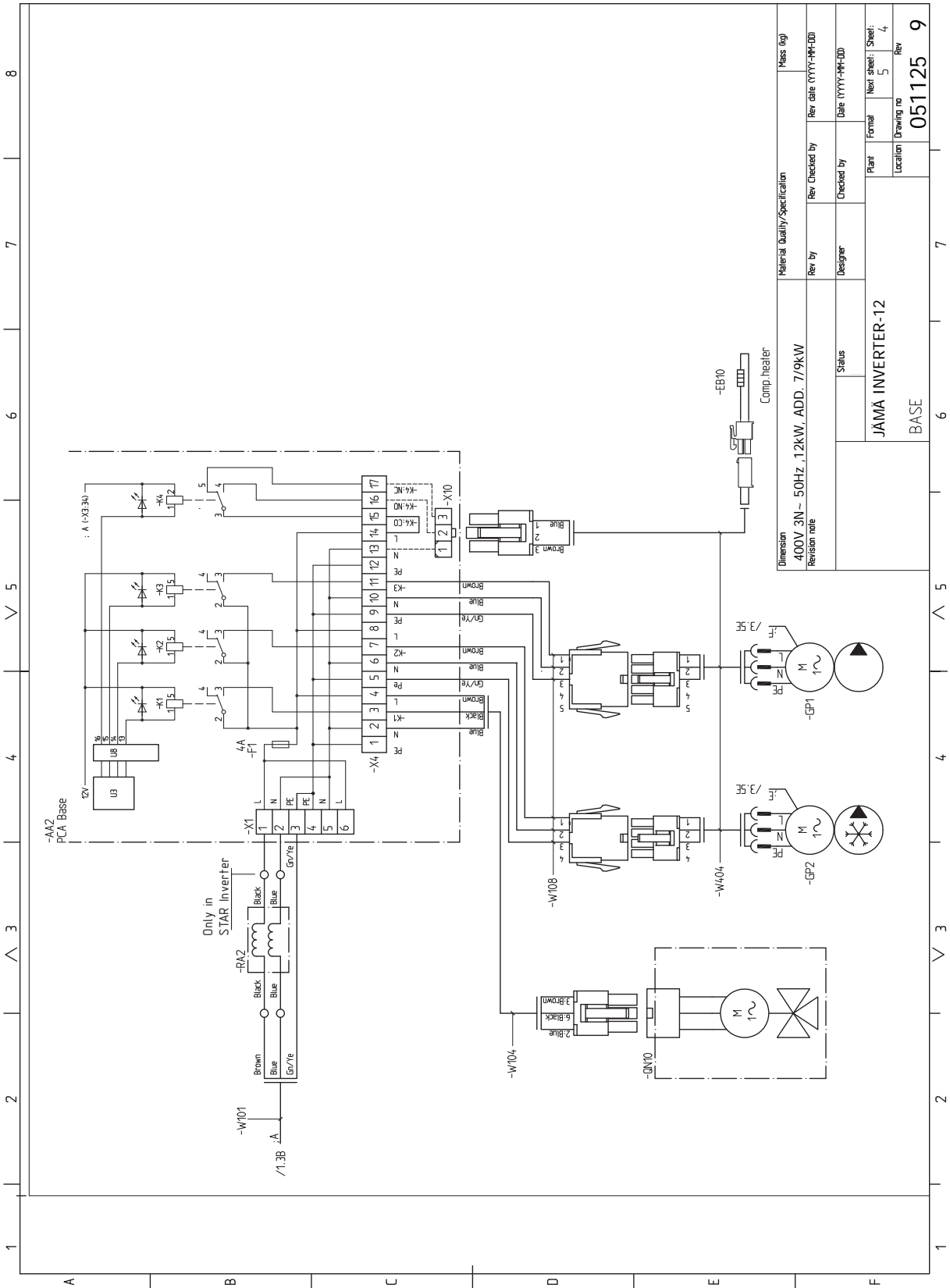
Material Quality/Specification		Mass (kg)	
Dimension	400V 3N ~ 50Hz, 12kW, ADD. 7/9KW	Rev Checked by	Rev date (YYYY-MM-DD)
Revision note		Designer	Checked by
Status		Plant	Format
		Location	Next sheet: Sheet: 1
			Drawing no
			Rev
			051125
			9

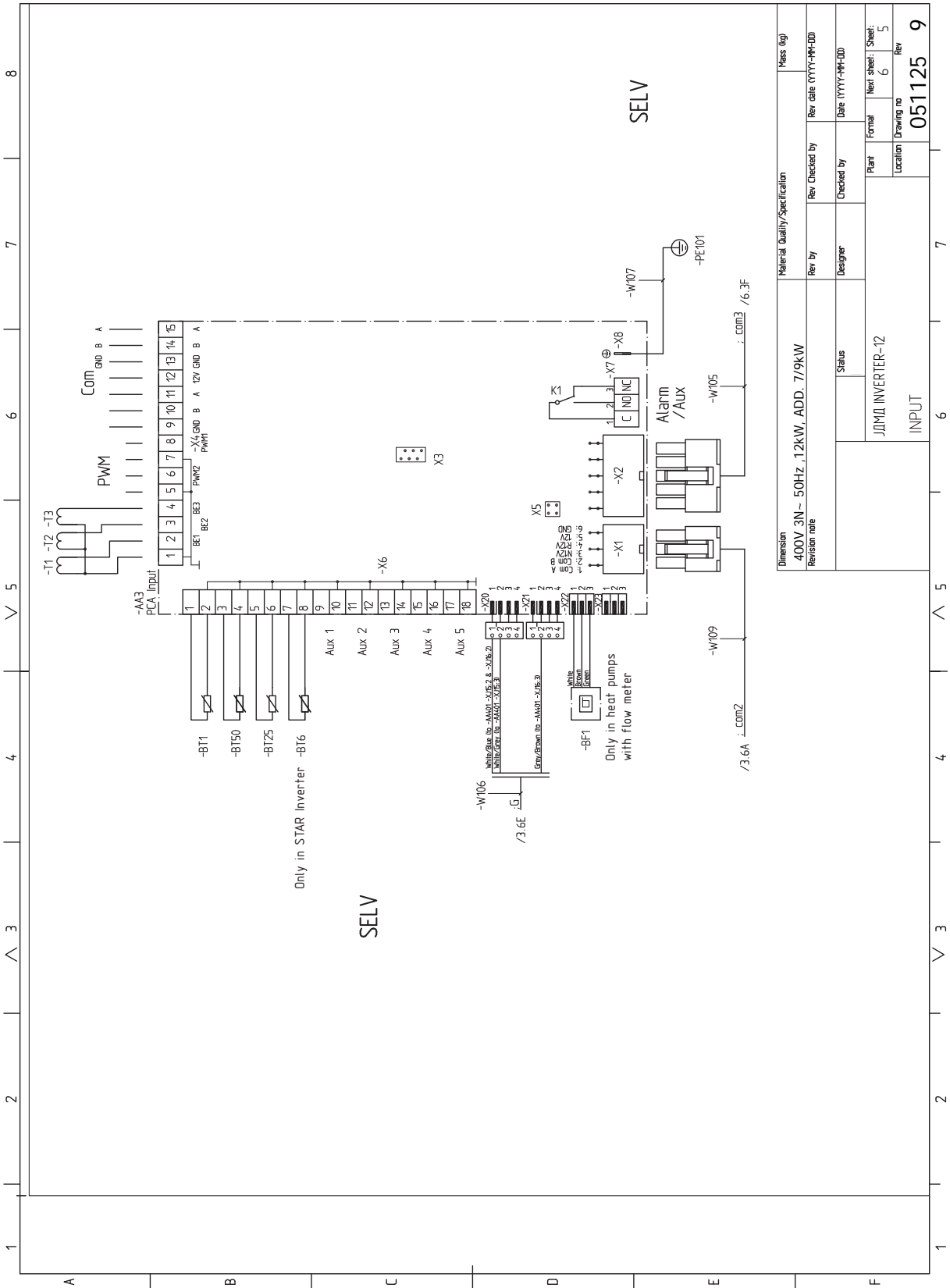
JAMA INVERTER-12
POWER

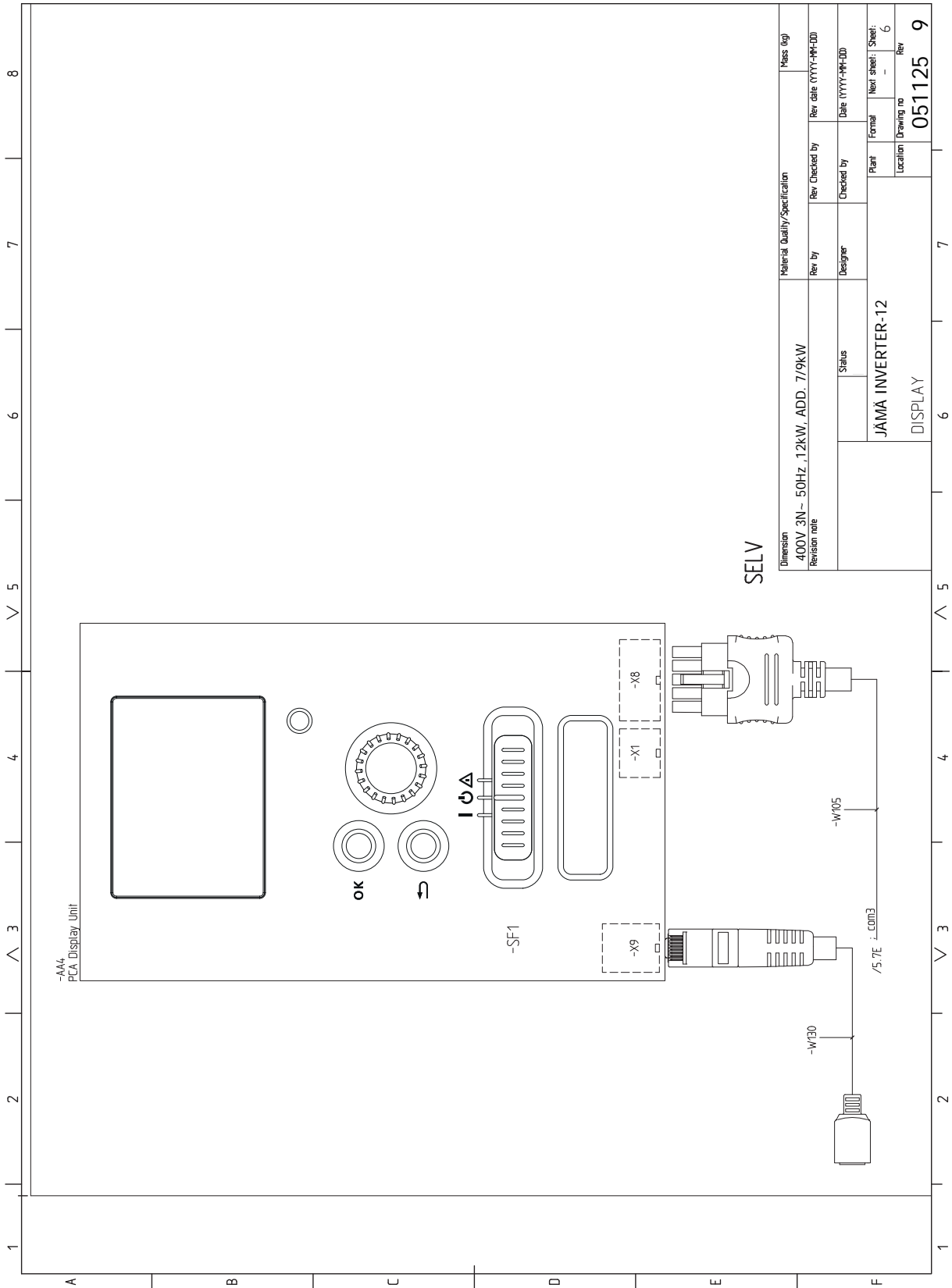


Dimension		Material Quality/Specification		Mass (kg)	
400V 3N- 50Hz , 12kW, ADD. 7/9kW					
Revision note		Rev by	Rev Checked by	Rev date (YYYY-MM-DD)	
		Designer	Checked by	Date (YYYY-MM-DD)	
		Status		Plant	Next sheet: Sheet:
		JÄMÄ INVERTER-12		Location	Drawing no
		POWER			051125
				Rev	9

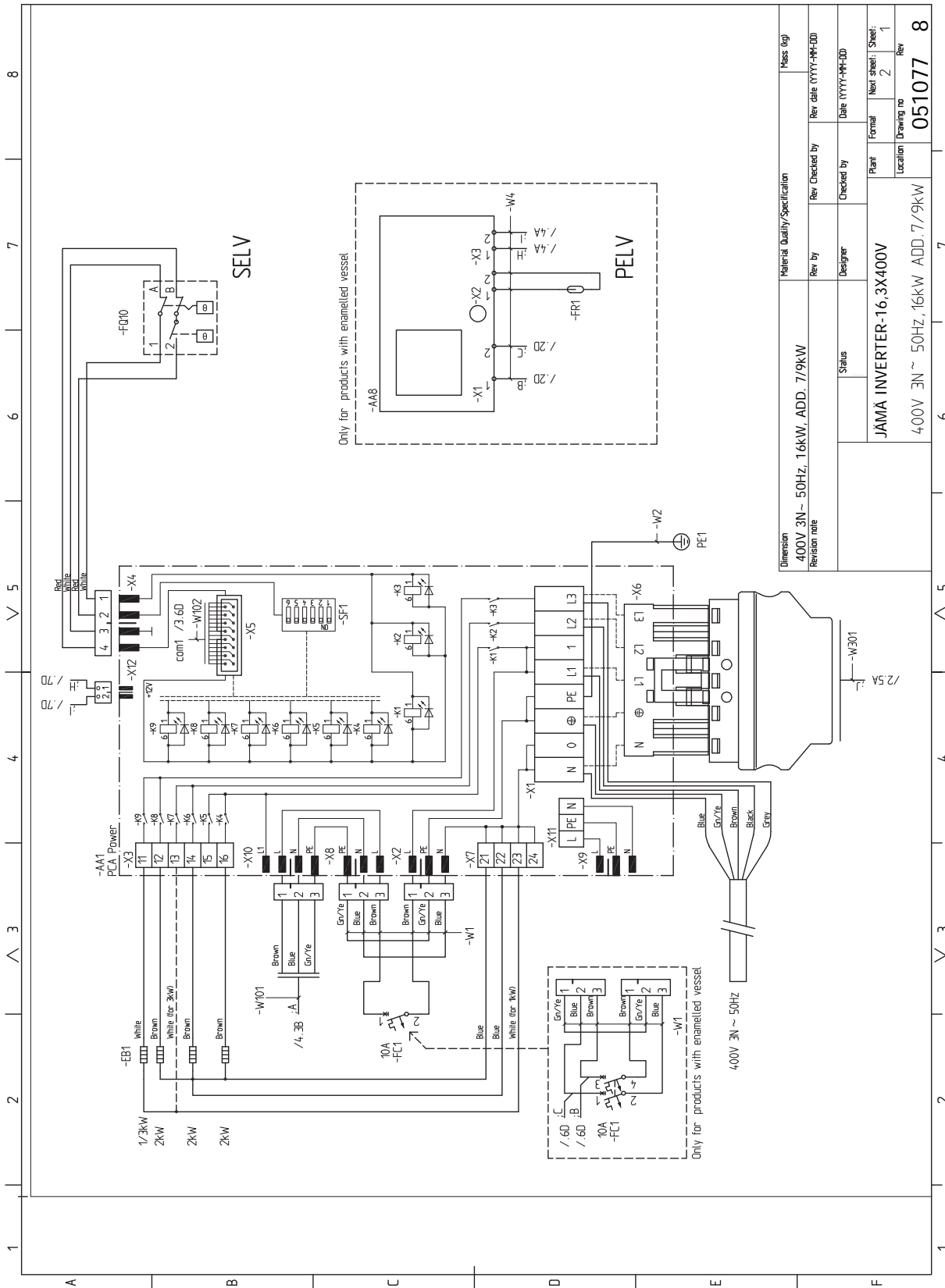


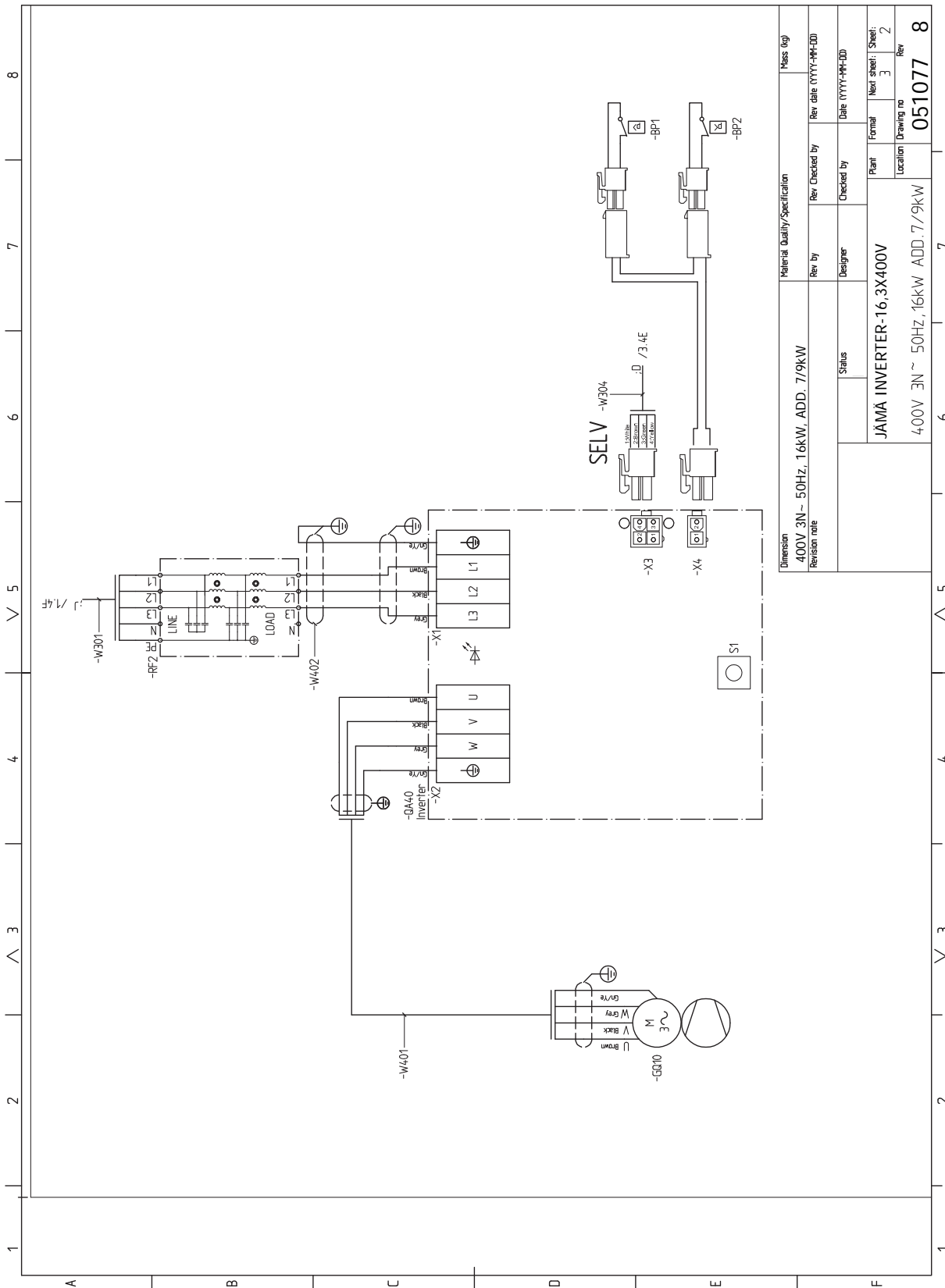




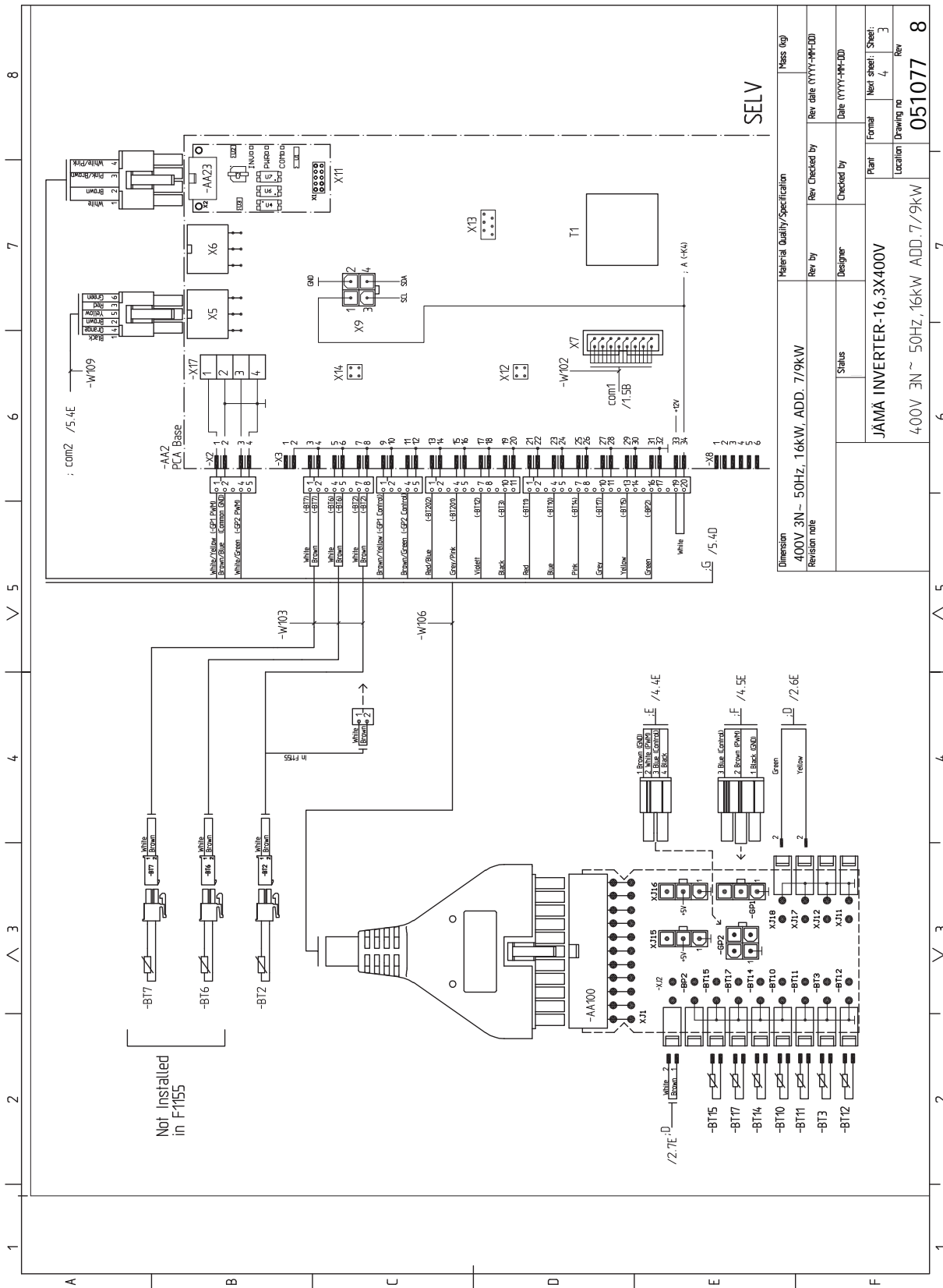


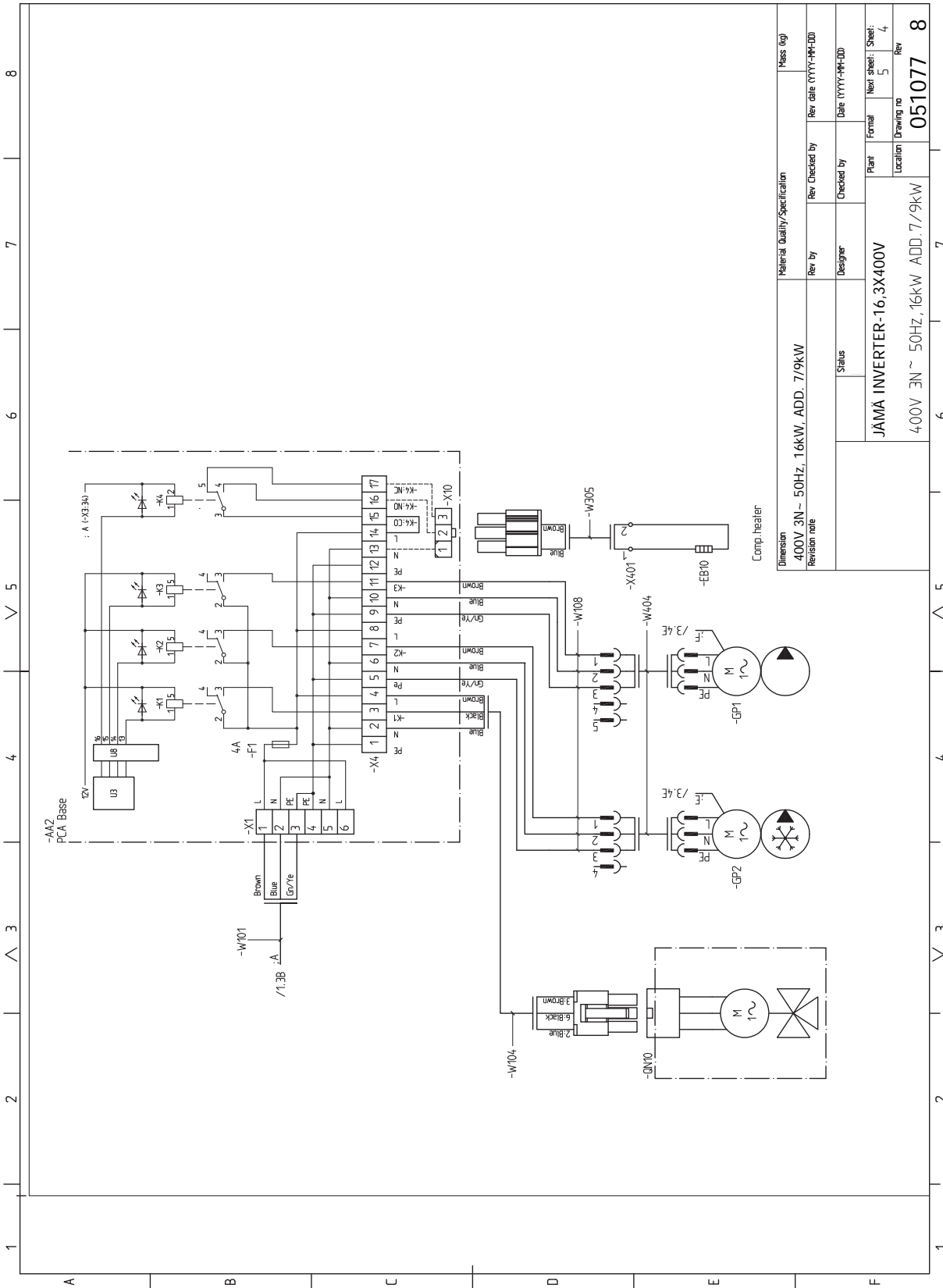
3x400V 16 kW (STAR Inverter/STAR RST Inverter)



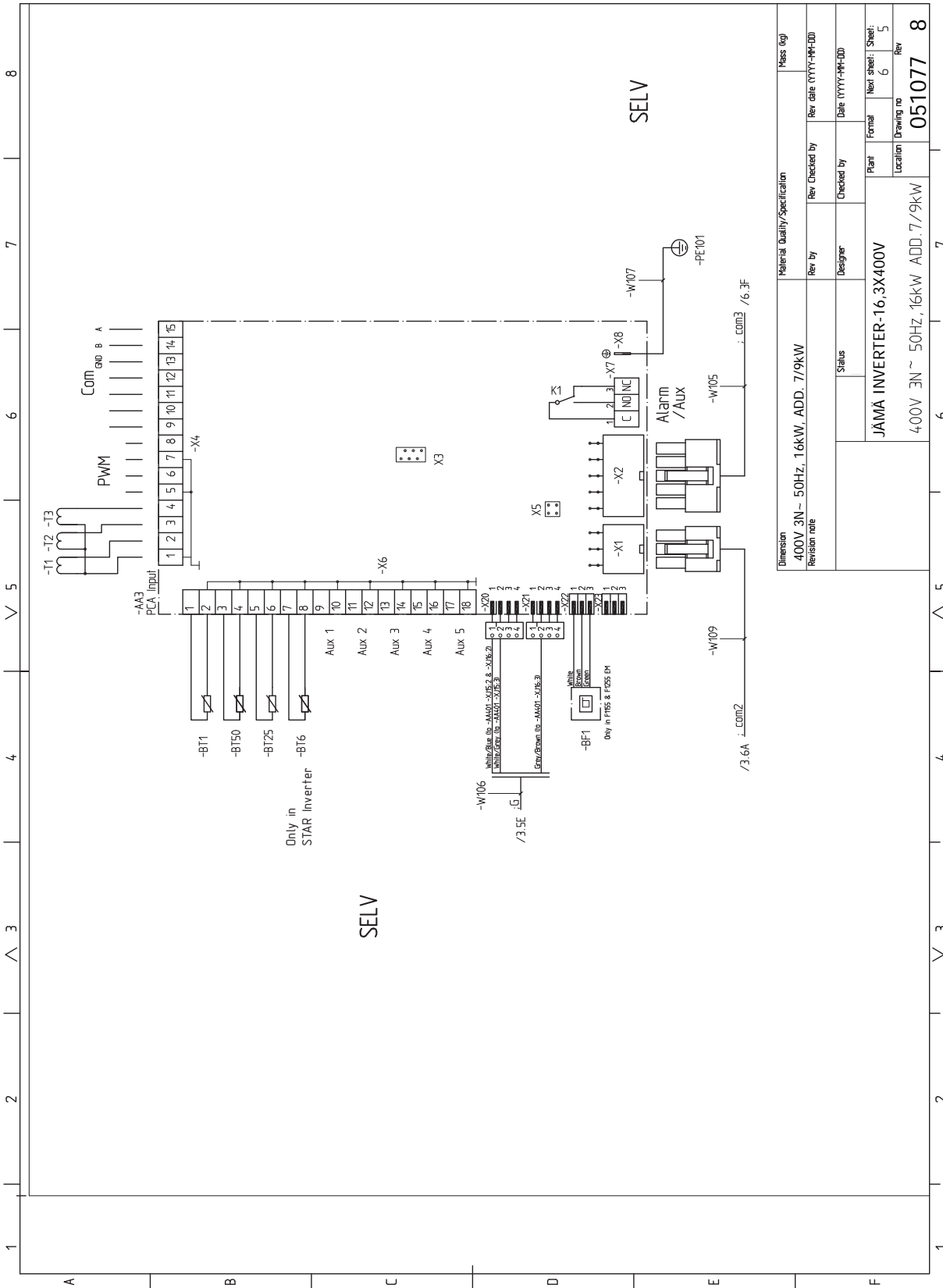


Material Quality/Specification		Mass (kg)	
Rev by	Designer	Rev Checked by	Date (YYYY-MM-DD)
Status	JÄMÄ INVERTER-16,3X400V	Checked by	Plant
Revision note	400V 3N ~ 50Hz, 16kW ADD. 7,9kW	Location	Next sheet: 3
			Sheet: 2
			Drawing no
			051077
			Rev
			8



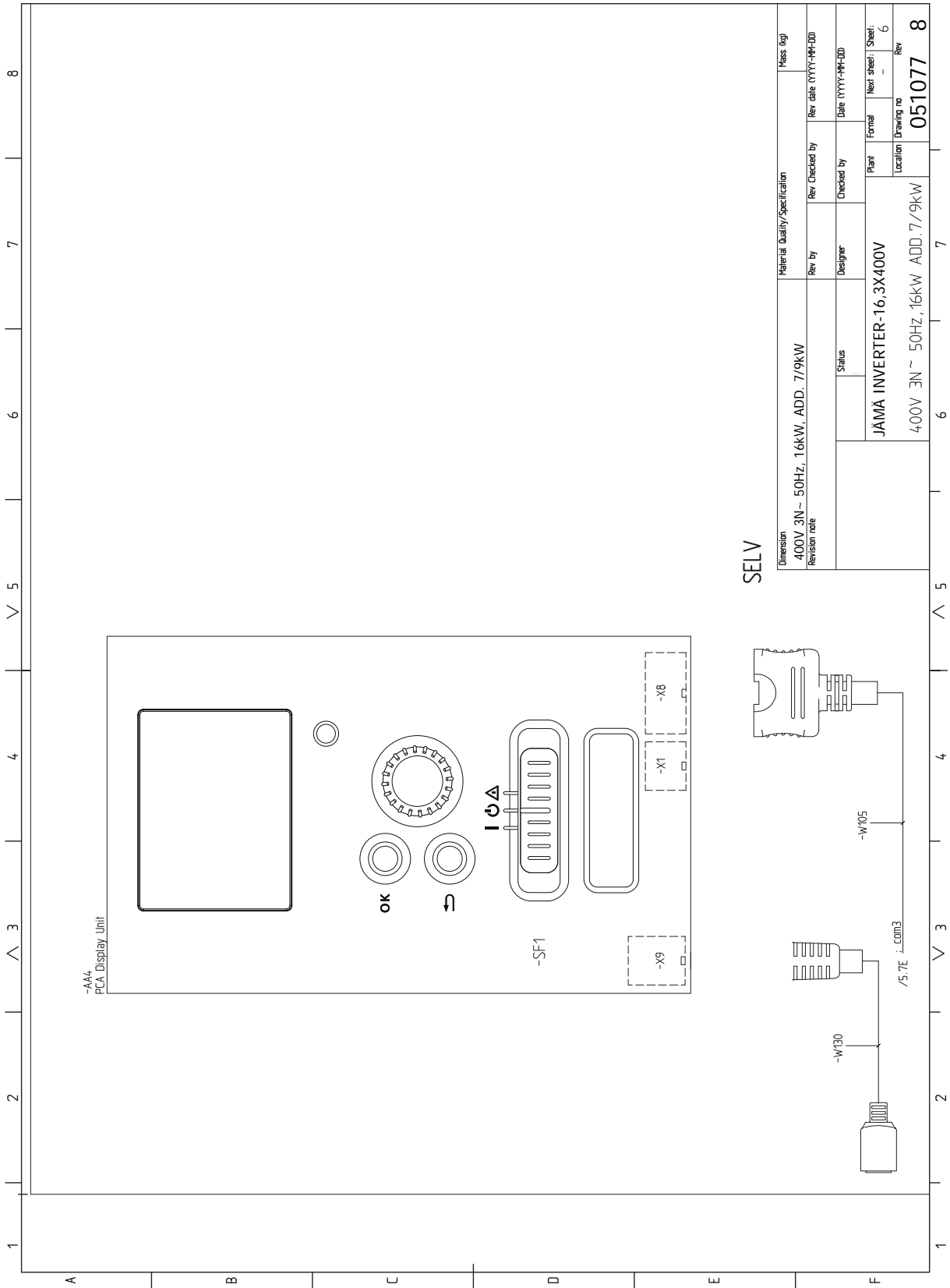


Material Quality/Specification		Mass (kg)
Dimension	400V 3N ~ 50Hz, 16kW, ADD. 7/9kW	
Revision note		
Rev by	Designer	Checked by
Rev date (YYYY-MM-DD)		Date (YYYY-MM-DD)
Status	JÄMÄ INVERTER-16,3X400V	Plant
	400V 3N ~ 50Hz, 16kW ADD. 7/9kW	Location
		Form
		Next sheet
		Sheet
		Drawing no
		Rev
		051077
		8



Material Quality/Specification		Mass (kg)	
Dimension	400V 3N~ 50Hz, 16kW, ADD. 7/9kW	Rev by	
Revision note		Checked by	
		Designer	
		Status	
		Rev date (YYYY-MM-DD)	
		Date (YYYY-MM-DD)	
		Plant	Next sheet: Sheet: 5
		Location	Drawing no
			051077
			Rev
			8

Material Quality/Specification		Mass (kg)	
Dimension	400V 3N~ 50Hz, 16kW, ADD. 7/9kW	Rev by	
Revision note		Checked by	
		Designer	
		Status	
		Rev date (YYYY-MM-DD)	
		Date (YYYY-MM-DD)	
		Plant	Next sheet: Sheet: 5
		Location	Drawing no
			051077
			Rev
			8



Translation table – Käännöstaulukko – Översättningstabell

	GB	FI	SE
AA1	Immersion heater card	Sähkövastuskortti	Elpatronskort
AA2	Base card	Peruskortti	Grundkort
AA3	Input circuit board	Tulokortti	Ingångskort
AA4	Display unit	Näyttö	Displayenhet
	AA4-XJ3 USB outlet (no function)	AA4-XJ3 USB-liitäntä (ei toimintoa)	AA4-XJ3 USB-uttag (ingen funktion)
	AA4-XJ4 Service outlet (No function)	AA4-XJ4 Huoltoliitäntä (ei toimintoa)	AA4-XJ4 Serviceuttag (ingen funktion)
AA23	Communication board	Tiedonsiirtokortti	Kommunikationskort
AA100	Joint card	Liitoskortti	Skarvkort
BF1	Flowmeter (optional)	Virtausmittari	Flödesmätare (valbar)
BP1	High pressure pressostat	Ylipaineensäädin	Högtryckspressostat
BP2	Low pressure pressostat	Alipaineensäädin	Lågtryckspressostat
BT2	Temperature sensors, heating medium flow	Lämpötilan anturi, lämpöjohto meno	Temperaturgivare, värmebärare fram
BT3	Temperature sensors, heating medium return	Lämpötilan anturi, lämpöjohto paluu	Temperaturgivare, värmebärare retur
BT6	Temperature sensor, hot water charging	Lämpötilan anturi, käyttöveden tuotanto	Temperaturgivare, varmvattenladdning
BT7	Temperature sensor, hot water top	Lämpötilan anturi, käyttövesi huippu	Temperaturgivare, varmvatten topp
BT10	Temperature sensor, brine in	Lämpötilan anturi, lämmönkeruu paluu	Temperaturgivare, köldbärare in
BT11	Temperature sensor, brine out	Lämpötilan anturi, lämmönkeruu meno	Temperaturgivare, köldbärare ut
BT12	Temperature sensor, condenser supply line	Lämpötila-anturi, lauhduttimen menojohto	Temperaturgivare, kondensator framledning
BT14	Temperature sensor, hot gas	Lämpötila-anturi, kuumakaasu	Temperaturgivare, hetgas
BT15	Temperature sensor, fluid pipe	Lämpötila-anturi, käyttövesi	Temperaturgivare, vätskeledning
BT17	Temperature sensor, suction gas	Lämpötila-anturi, imukaasu	Temperaturgivare, suggas
CA1	Capacitor	Kondensaattori	Kondensator
EB1	Immersion heater	Sähkövastus	Elpatron
EB10	Compressor heater	Kompressorilämmitin	Kompressorvärmare
EP1	Evaporator	Höyrystin	Förångare
EP2	Condenser	Lauhdutin	Kondensator
EP14	Cooling module	Jäähdytysmoduuli	Kylmodul
FC1	Miniature circuit-breaker	Automaattivaroke	Automatsäkring
FQ1	Temperature limiter/Emergency mode thermostat	Lämpötilanrajoitin/varatilatermostaatti	Temperaturbegränsare/Reservlägesthermostat
FR1	Sacrificial anode	Sähköanodi	Elanod
GP1	Circulation pump	Lämpöjohtopumppu	Värmebärarpump
GP2	Brine pump	Lämmönkeruupumppu	Köldbärarpump
GQ10	Compressor	Kompressori	Kompressor
HS1	Drying filter	Kuivaussuodatin	Torkfilter
PF1	Rating plate	Tyypikilpi	Dataskylt
PF2	Type plate, cooling section	Tyypikilpi, kylmäosa	Typskylt kyldel
QA40	Inverter	Invertteri	Inverter
QM1	Drainage, climate system	Tyhjennys, lämmitysjärjestelmä	Avtappning, klimatsystem
QM2	Draining, brine side	Tyhjennys, lämmönkeruupuoli	Avtappning, köldbärarsystem
QM22	Venting, coil	Ilmaus, silmukka	Avluftning, slinga

	GB	FI	SE
QM31	Shut off valve, heating medium flow	Sulkuventtiili, lämmitysvesi meno	Avstängningsventil, värmebärare fram
QM32	Shut off valve, heating medium return	Sulkuventtiili, lämpöjohto paluu	Avstängningsventil, värmebärare retur
QM33	Shut off valve, brine out	Sulkuventtiili, lämmönkeruuliuos meno	Avstängningsventil, köldbärare ut
QM34	Shut-off valve, brine in	Sulkuventtiili, lämmönkeruu paluu	Avstängningsventil, köldbärare in
QN1	Expansion valve	Paisuntaventtiili	Expansionsventil
QN10	Shuttle valve, climate system/water heater	Vaihtuventtiili, lämmitysjärjestelmä/lämminvesivaraaja	Växselventil, klimatsystem/varmvattenberedare
RA1	Choke	Kurtisin	Drossel
RF2	EMC-filter	EMS-suodatin	EMC-filter
SF1	Switch	Katkaisin	Strömställare
UB1	Cable gland, incoming electricity	Kaapeliläpivienti, syöttökaapelil	Kabelgenomföring, inkommande el
UB2	Cable gland	Kaapeliläpivienti	Kabelgenomföring
UB3	Cable gland, rear side, sensor	Kaapeliläpivienti, takapuoli, anturit	Kabelgenomföring, baksida, givare
XL1	Connection, heating medium flow	Liitântä, lämpöjohto meno	Anslutning, värmebärare fram
XL2	Connection, heating medium return	Liitântä, lämpöjohto paluu	Anslutning, värmebärare retur
XL3	Connection, cold water	Liitântä, kylmävesi	Anslutning, kallvatten
XL4	Connection, hot water (STAR RST)	Liitântä, käyttövesi (STAR RST)	Anslutning, varmvatten (STAR RST)
XL5	Connection, HWC	Liitântä, VVC	Anslutning, VVC
XL6	Connection, brine in	Liitântä, lämmönkeruu tulo	Anslutning, köldbärare in
XL7	Connection, brine out	Liitântä, lämmönkeruu meno	Anslutning, köldbärare ut
XL9	Connecting, hot water heater (STAR)	Liitântä, lämminvesivaraaja (STAR)	Anslutning, varmvattenberedare (STAR)
XL20	Service connection, high pressure	Huoltoliitântä, ylipaine	Serviceanslutning, högtryck
XL21	Service connection, low pressure	Huoltoliitântä, alipaine	Serviceanslutning, lågtryck

Kaukora Oy
PL 21, Tuotekatu 11
212 01 Raisio
+358 2 437 4600
E-mail: kaukora@kaukora
www.kaukora.fi



331366