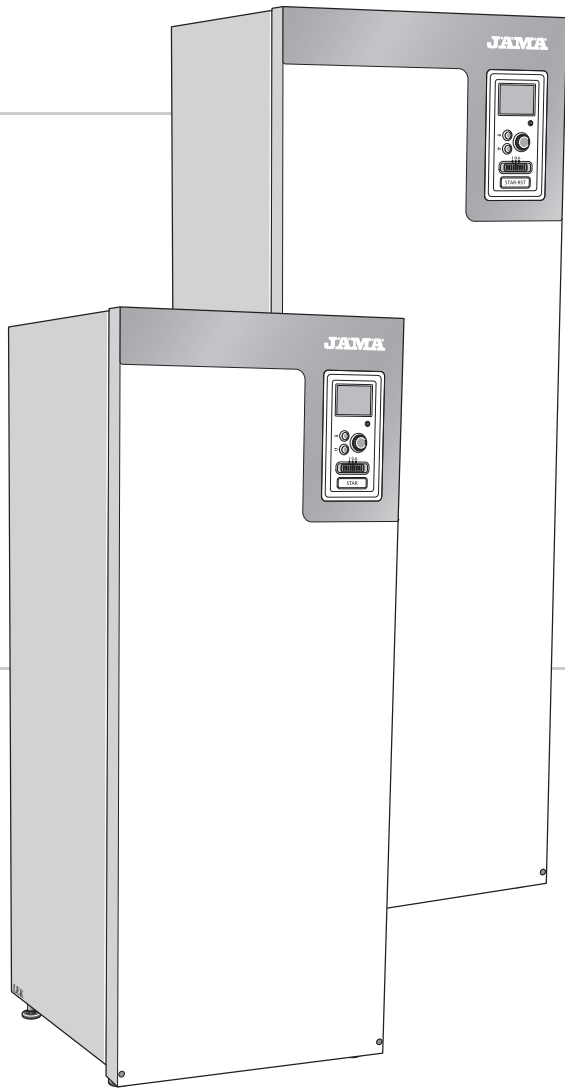


JAMMA



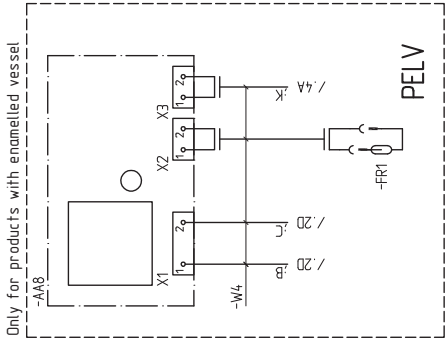
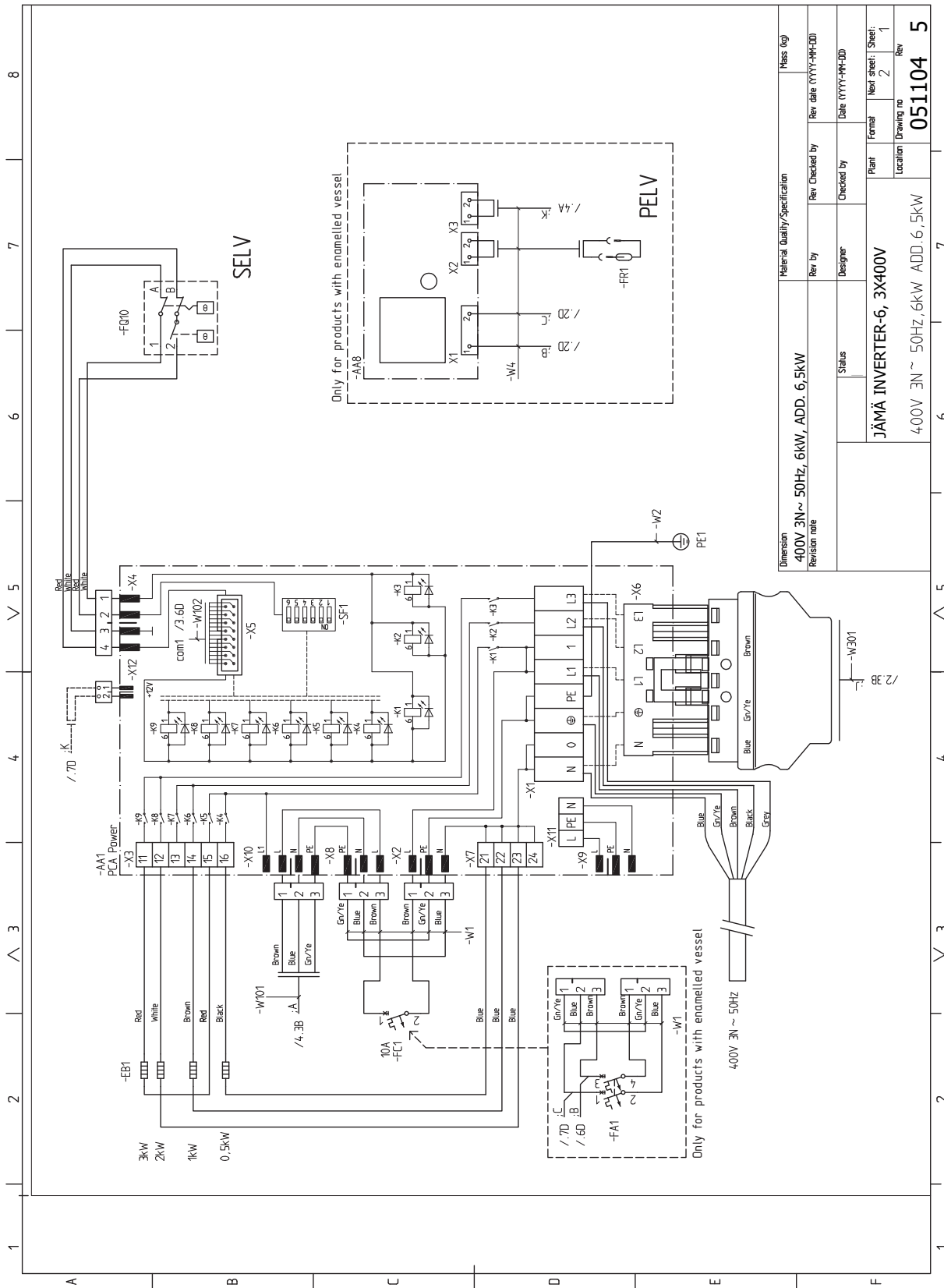
STAR Inverter & STAR RST Inverter

WHB 2039-6
331366

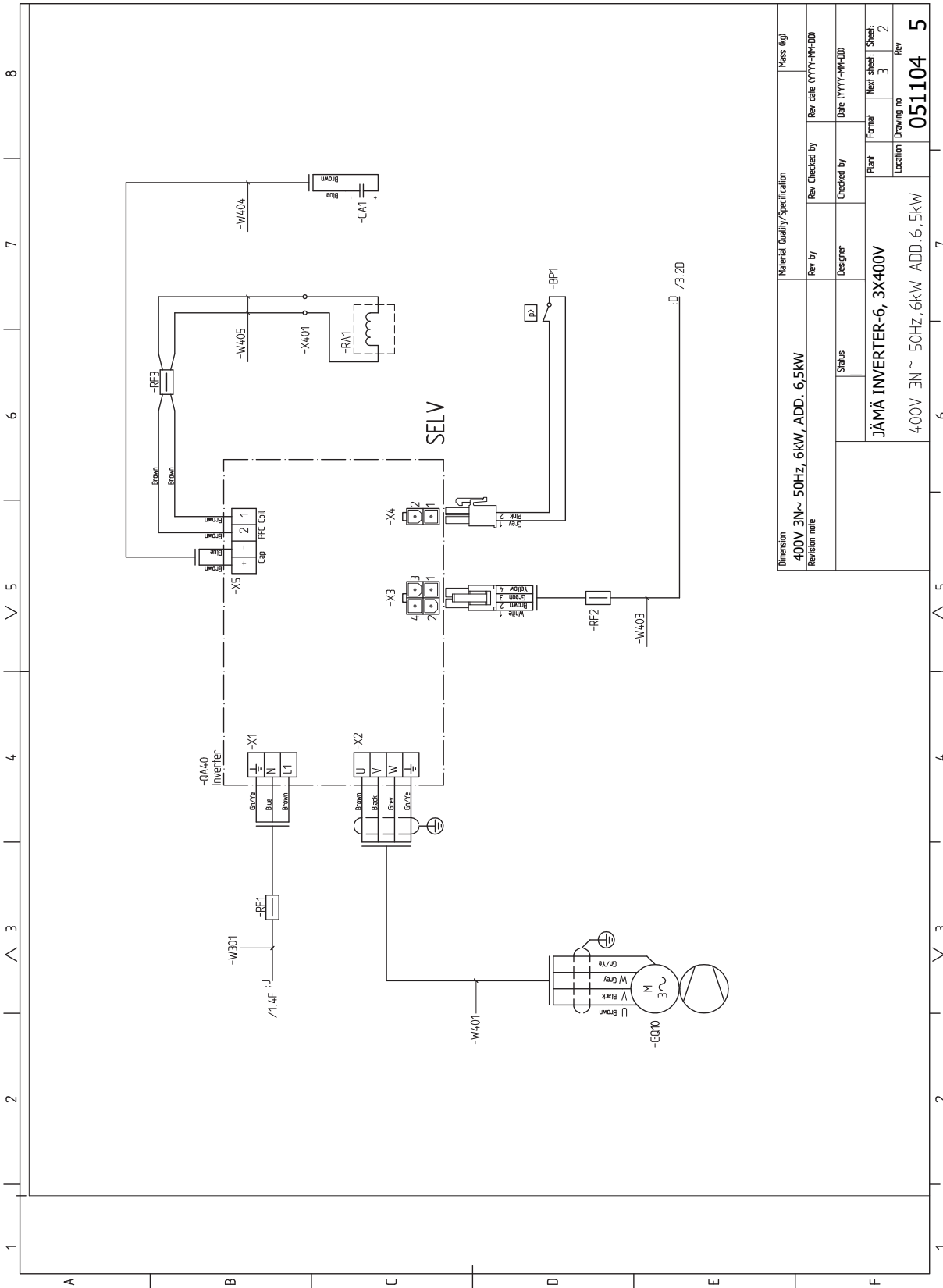
Table of Contents

3x400V 6 kW (STAR Inverter/STAR RST Inverter) __	4
3x400V 12 kW (STAR Inverter/STAR RST Inverter) _	10
3x400V 16 kW (STAR Inverter/STAR RST Inverter) _	16

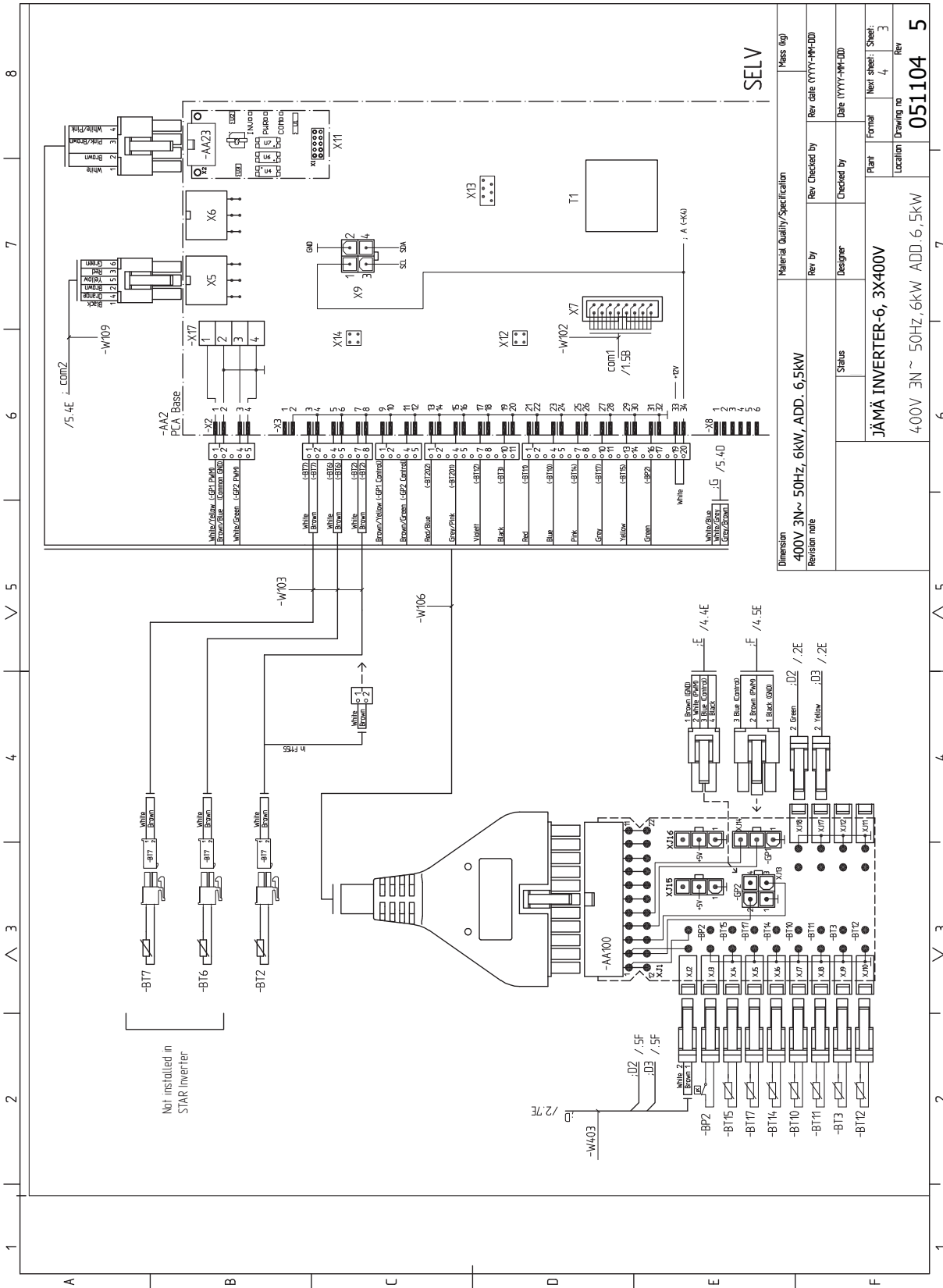
3x400V 6 kW (STAR Inverter/STAR RST Inverter)



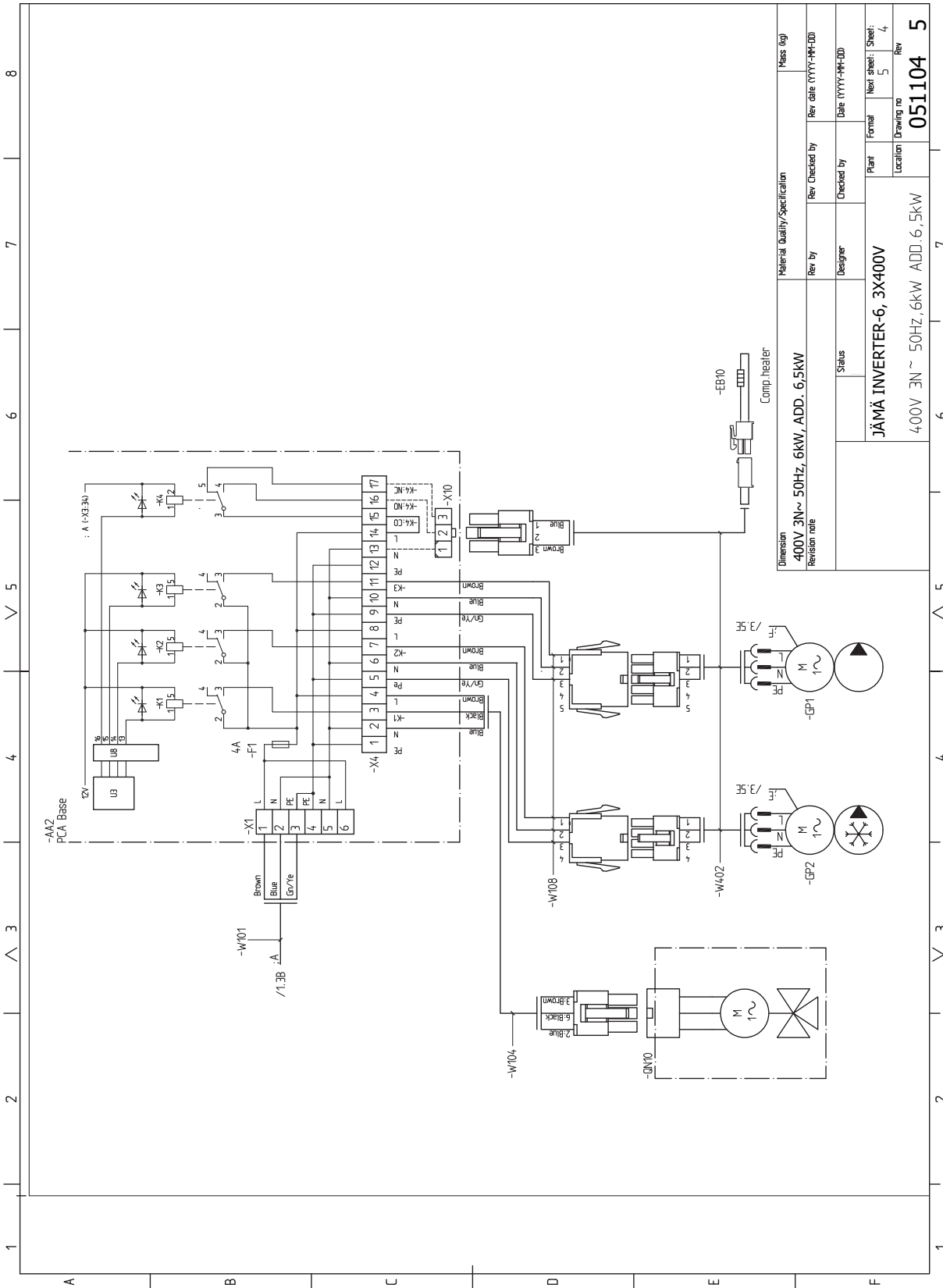
Material Quality/Specification		Mass (kg)
400V 3N ~ 50Hz, 6kW, ADD. 6,5kW		
Revision note		
Rev. by	Rev. Checked by	Rev. date (YYYY-MM-DD)
Status	Checked by	Date (YYYY-MM-DD)
Designer		Plant
JÄMÄ INVERTER-6, 3X400V		Next sheet: 1
400V 3N ~ 50Hz, 6kW, ADD. 6,5kW		Drawing no
		051104
		Rev
		5



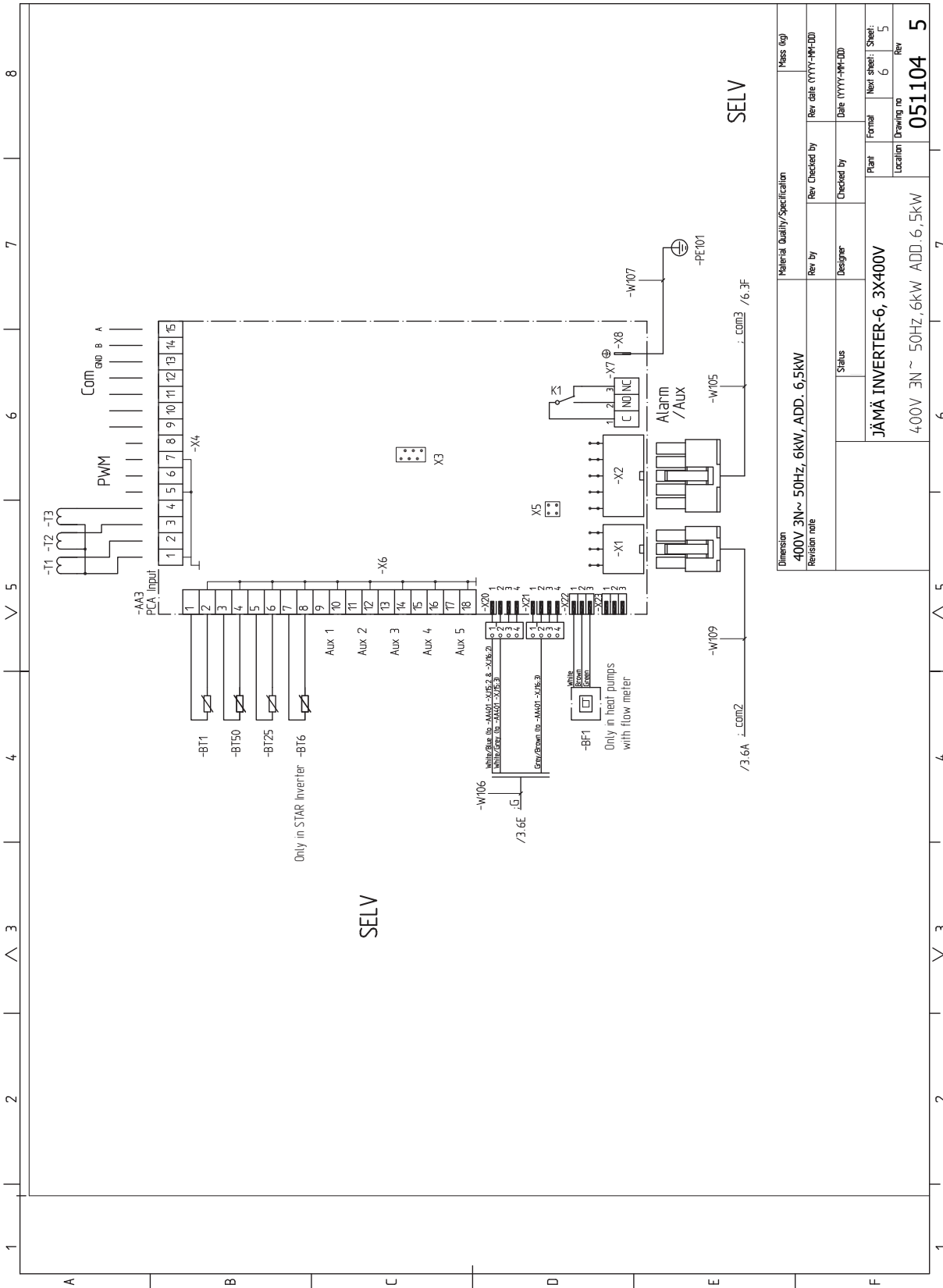
Material Quality/Specification		Mass (kg)	
Dimension	400V 3N~ 50Hz, 6kW, ADD. 6.5kW	Rev by	Rev Checked by
Revision note		Designer	Checked by
Status		Date (YYYY-MM-DD)	
JÄMÄ INVERTER-6, 3X400V		Plant	Next sheet: Sheet: 2
4.00V 3N ~ 50Hz, 6kW ADD. 6,5kW		Location	Drawing no
		051104 5	



Material Quality/Specification		Phase (Vlg)	
Dimension	400V 3N~ 50Hz, 6kW, ADD. 6.5kW	Rev Checked by	Rev date (YYYY-MM-DD)
Revision note		Checked by	Date (YYYY-MM-DD)
Status		Designer	Plant
JÄMÄ INVERTER-6, 3X400V		Location	Next sheet: Sheet: 3
4.00V 3N ~ 50Hz, 6kW, ADD. 6,5kW		Drawing no	Rev
		051104	5



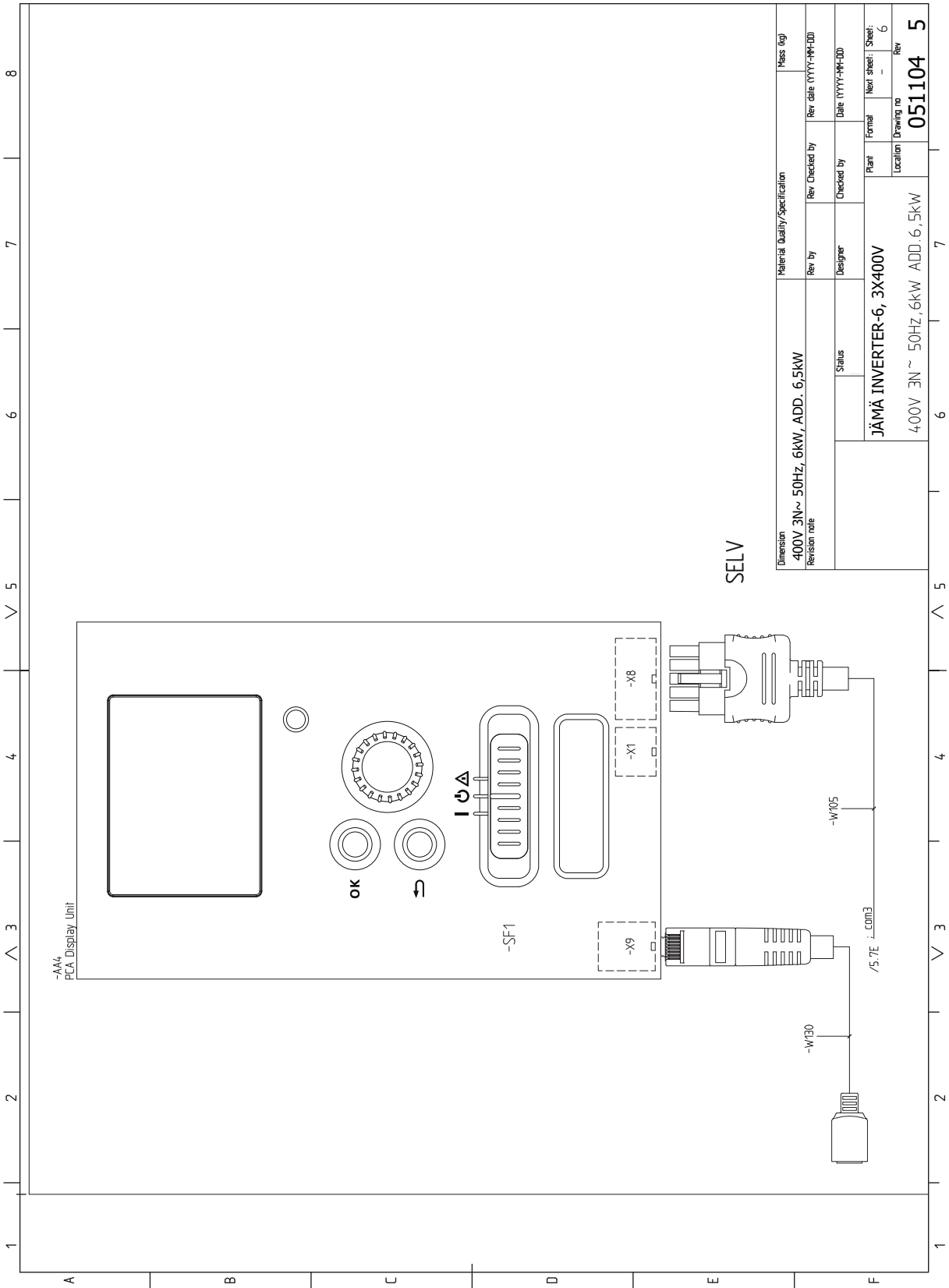
Material Quality/Specification		Mass (kg)	
Rev. by	Designer	Rev. checked by	Rev. date (YYYY-MM-DD)
Status		Checked by	Date (YYYY-MM-DD)
JÄMÄ INVERTER-6, 3X400V		Plant	Next sheet: 4
4.00V 3N ~ 50Hz, 6kW ADD. 6,5kW		Location	Drawing no
			Rev
			051104
			5



SELV

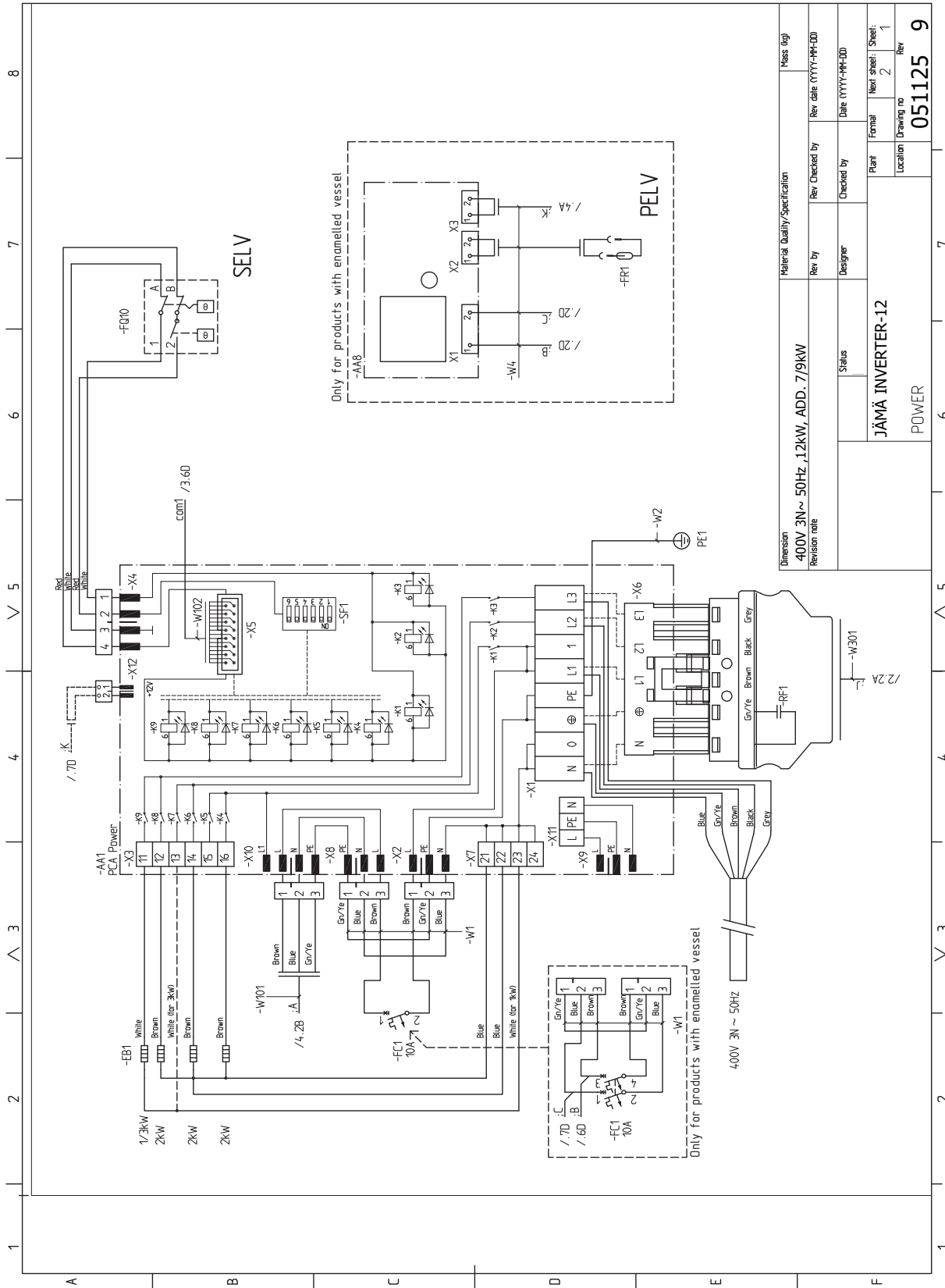
SELV

Material Quality/Specification		Mass (kg)
Dimension	400V 3N~ 50Hz, 6kW, ADD. 6.5kW	
Revision note		
Rev by	Designer	
Rev Checked by		
Checked by		
Date (YYYY-MM-DD)		
Plant	JÄMÄ INVERTER-6, 3X400V	Next sheet: Sheet: 5
Location	400V 3N~ 50Hz, 6kW, ADD. 6.5kW	Formal Drawing no: 051104
		Rev: 5

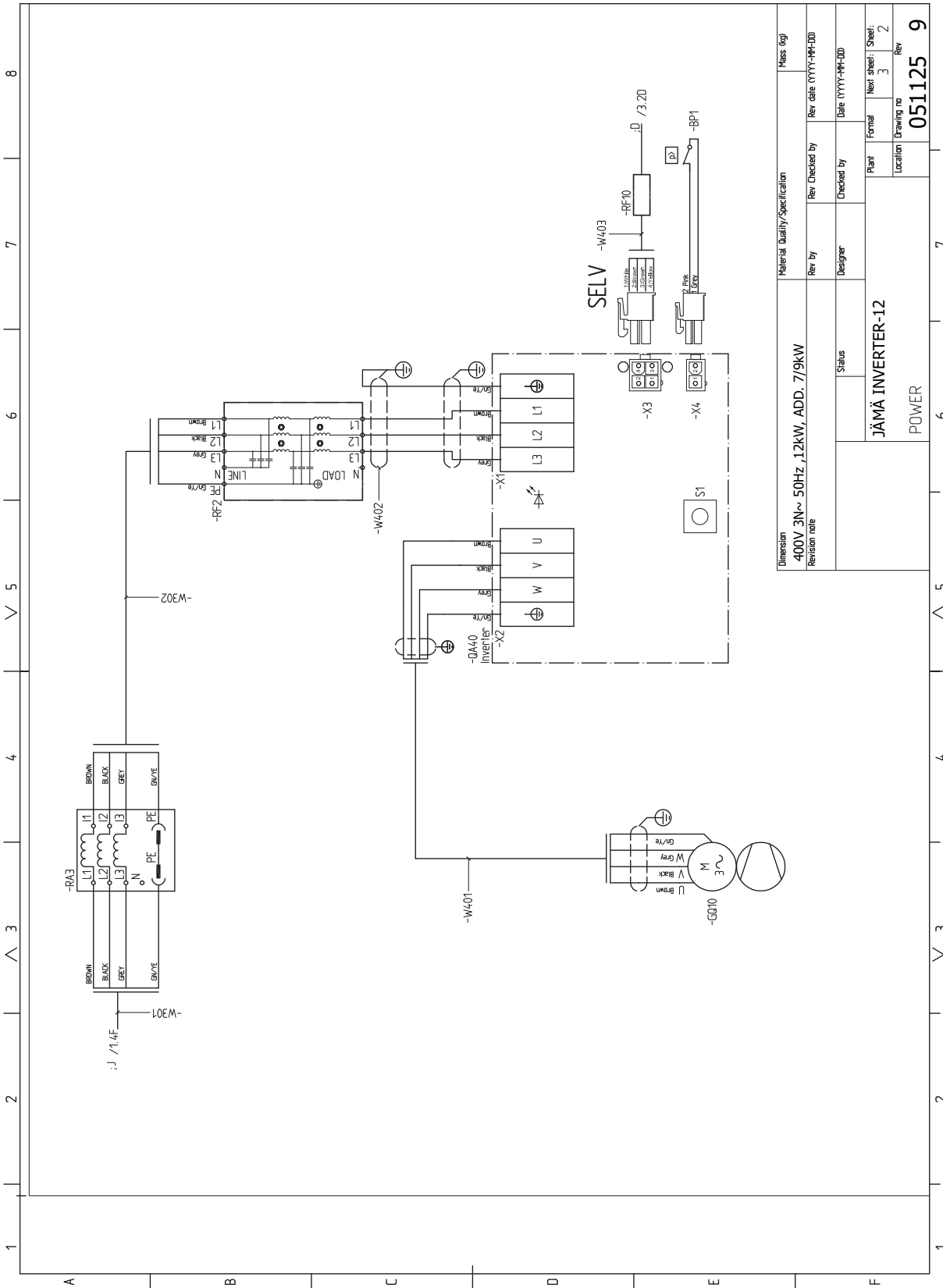


Dimension		Material Quality/Specification		Mass (kg)	
400V 3N~ 50Hz, 6kW, ADD. 6,5kW					
Revision note		Rev by	Checked by	Rev date (YYYY-MM-DD)	
		Designer		Date (YYYY-MM-DD)	
		Status	Plant	Formal	Next sheet: Sheet: 6
		JÄMÄ INVERTER-6, 3X400V		Location	Drawing no
		400V 3N ~ 50Hz, 6kW ADD. 6,5kW			051104 5

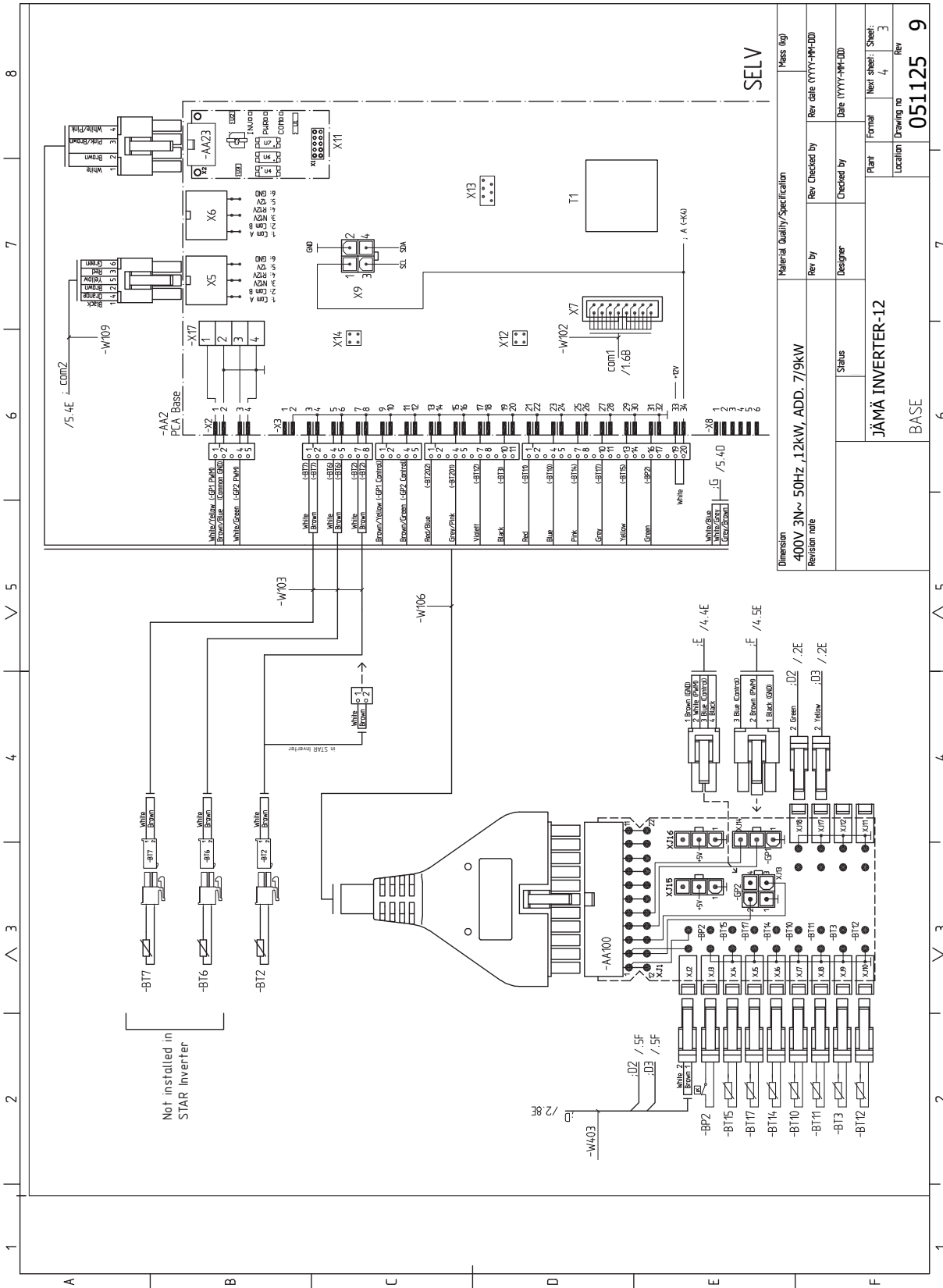
3x400V 12 kW (STAR Inverter/STAR RST Inverter)

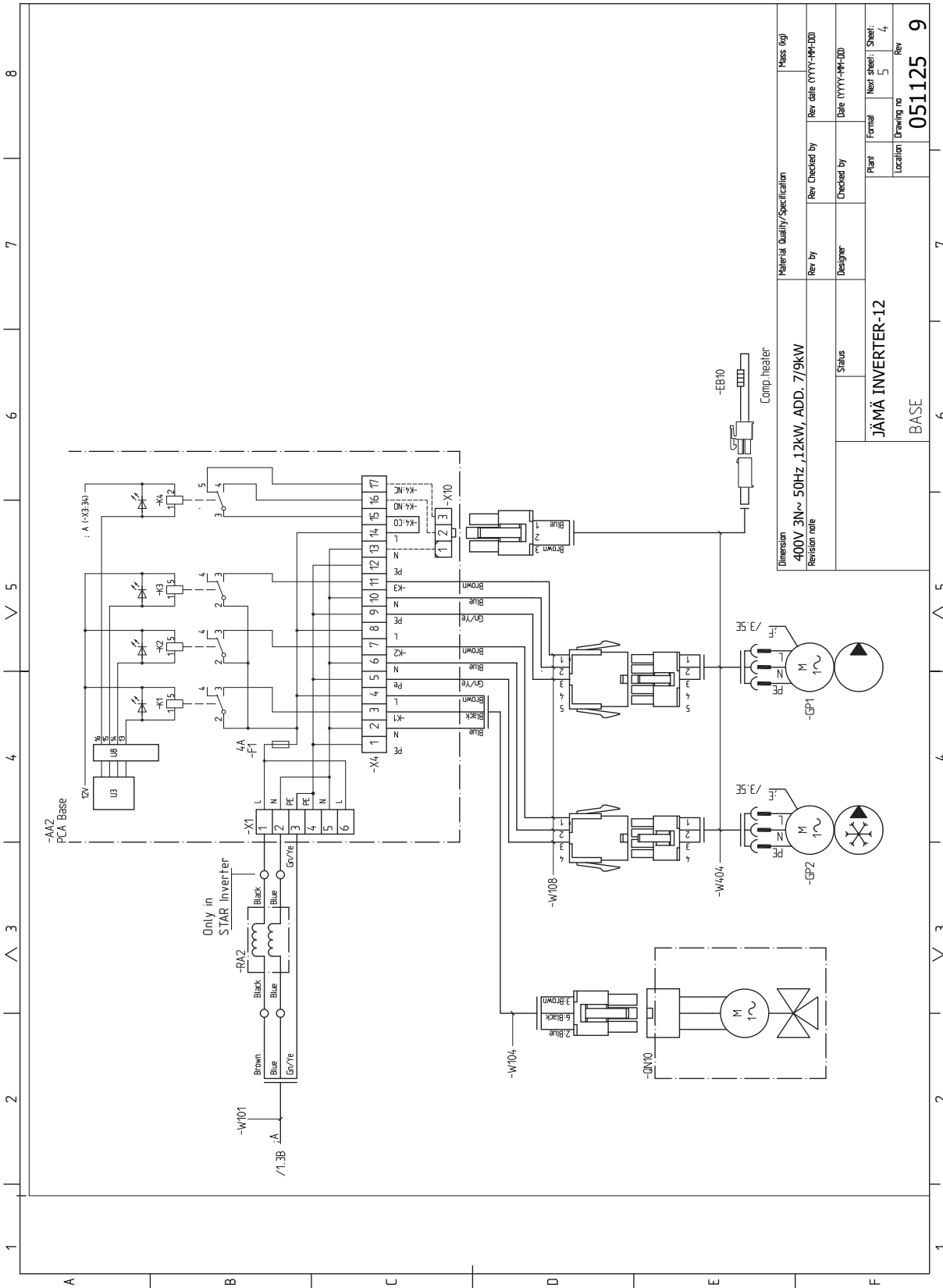


Dimension	400V 3N ~ 50Hz, 12kW, ADD. 7/9kW			Material Quality/Specification	Mass (kg)
Revision note		Rev. by	Rev. Checked by	Rev. date (YYYY-MM-DD)	
		Status	Designer	Checked by	
	JÄMÄ INVERTER-12			Plant	Next sheet: 1
	POWER			Location	Drawing no
				051125	9

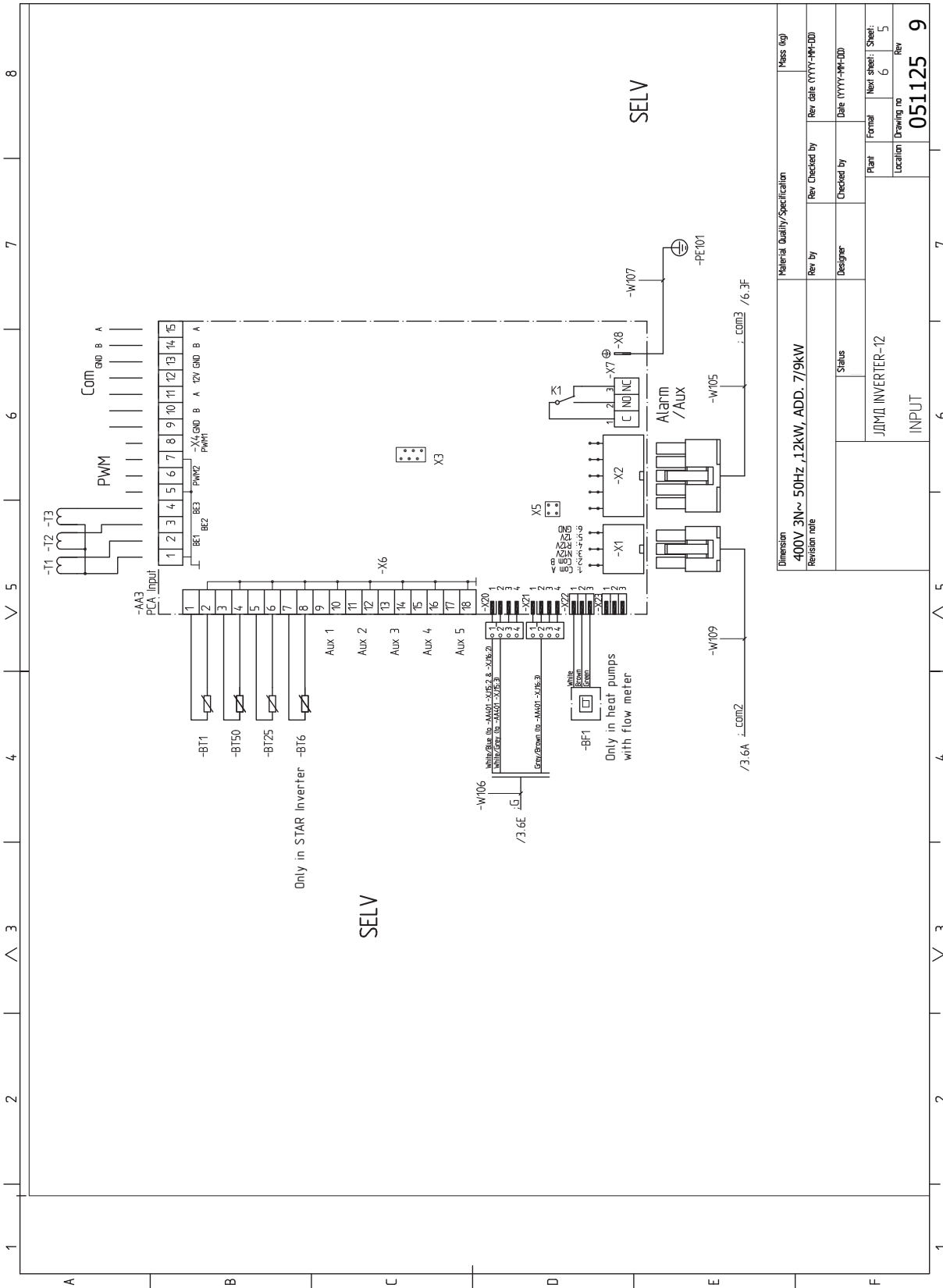


Material Quality/Specification		Mass (kg)	
Dimension	400V 3N~ 50Hz, 12kW, ADD. 7/9kW	Rev by	Rev date (YYYY-MM-DD)
Revision note		Checked by	Date (YYYY-MM-DD)
Status		Plant	Next sheet: Sheet: 2
JÄMÄ INVERTER-12		Location	Drawing no
POWER		051125 9	



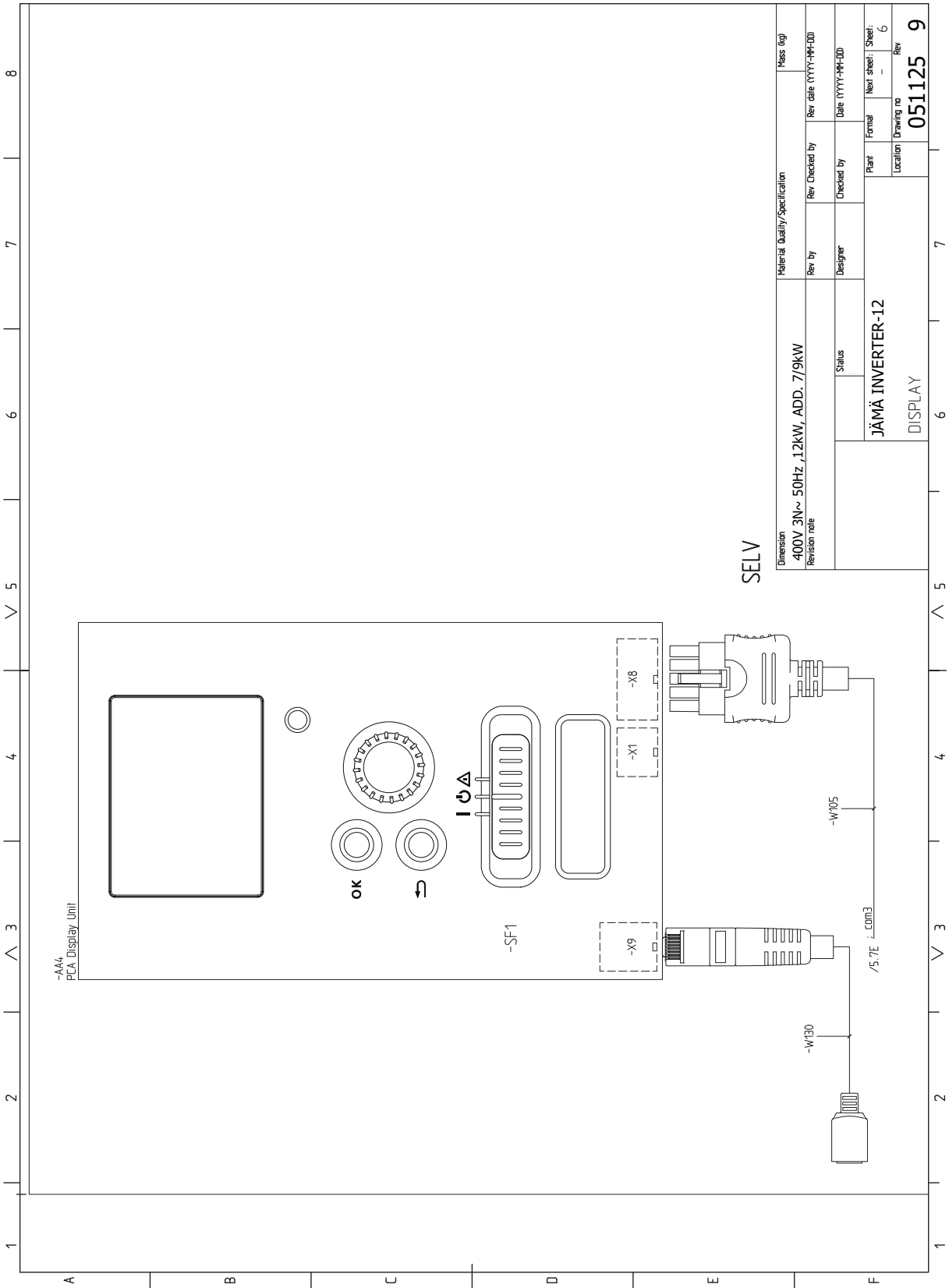


Material Quality/Specification		Mass (kg)	
Rev by	Designer	Rev Checked by	Rev date (YYYY-MM-DD)
Checked by		Date (YYYY-MM-DD)	
Status		Plant	Next sheet: Sheet: 4
JÄMÄ INVERTER-12		Location	Drawing no
BASE		051125	
		Rev	
		9	

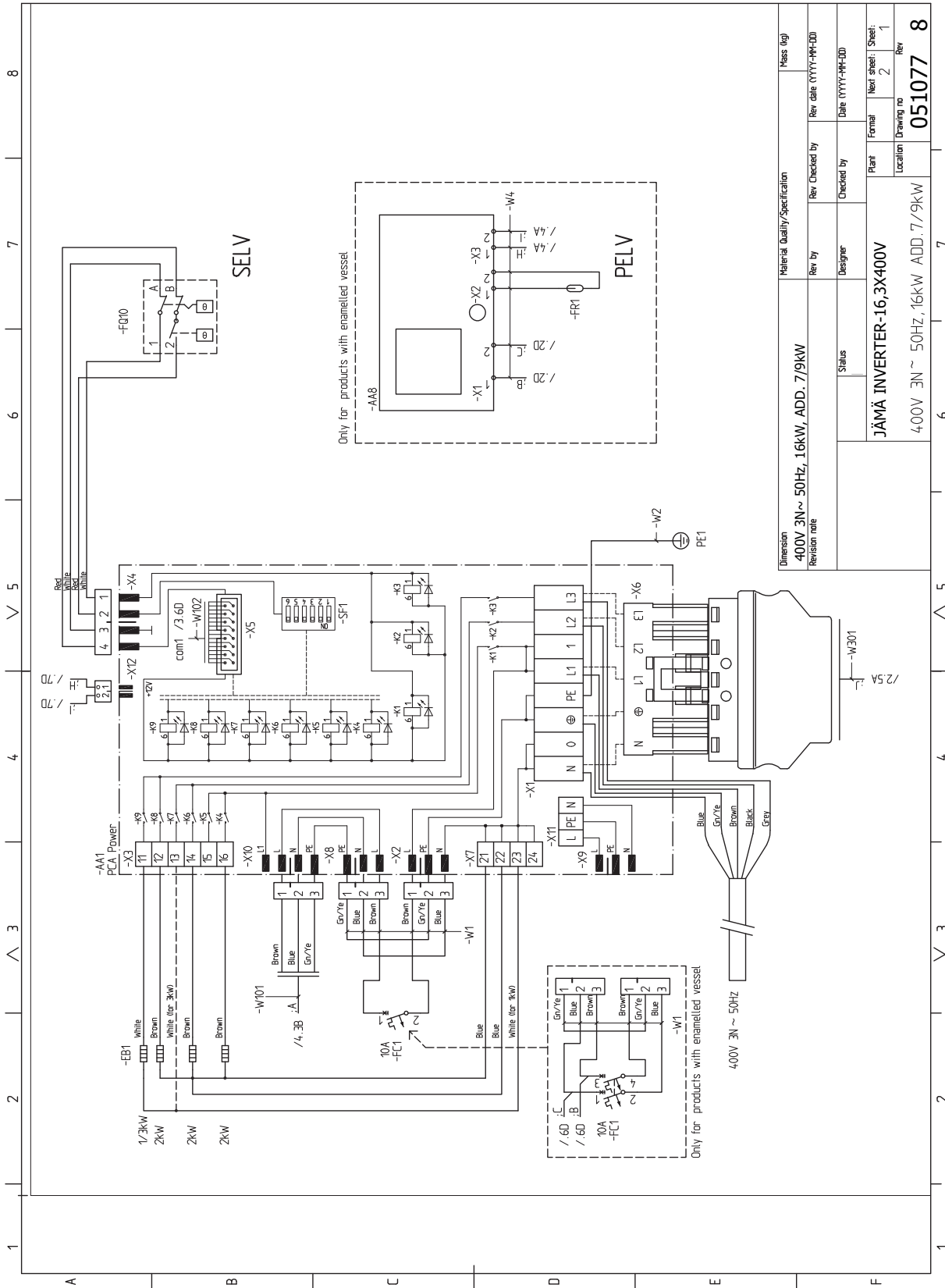


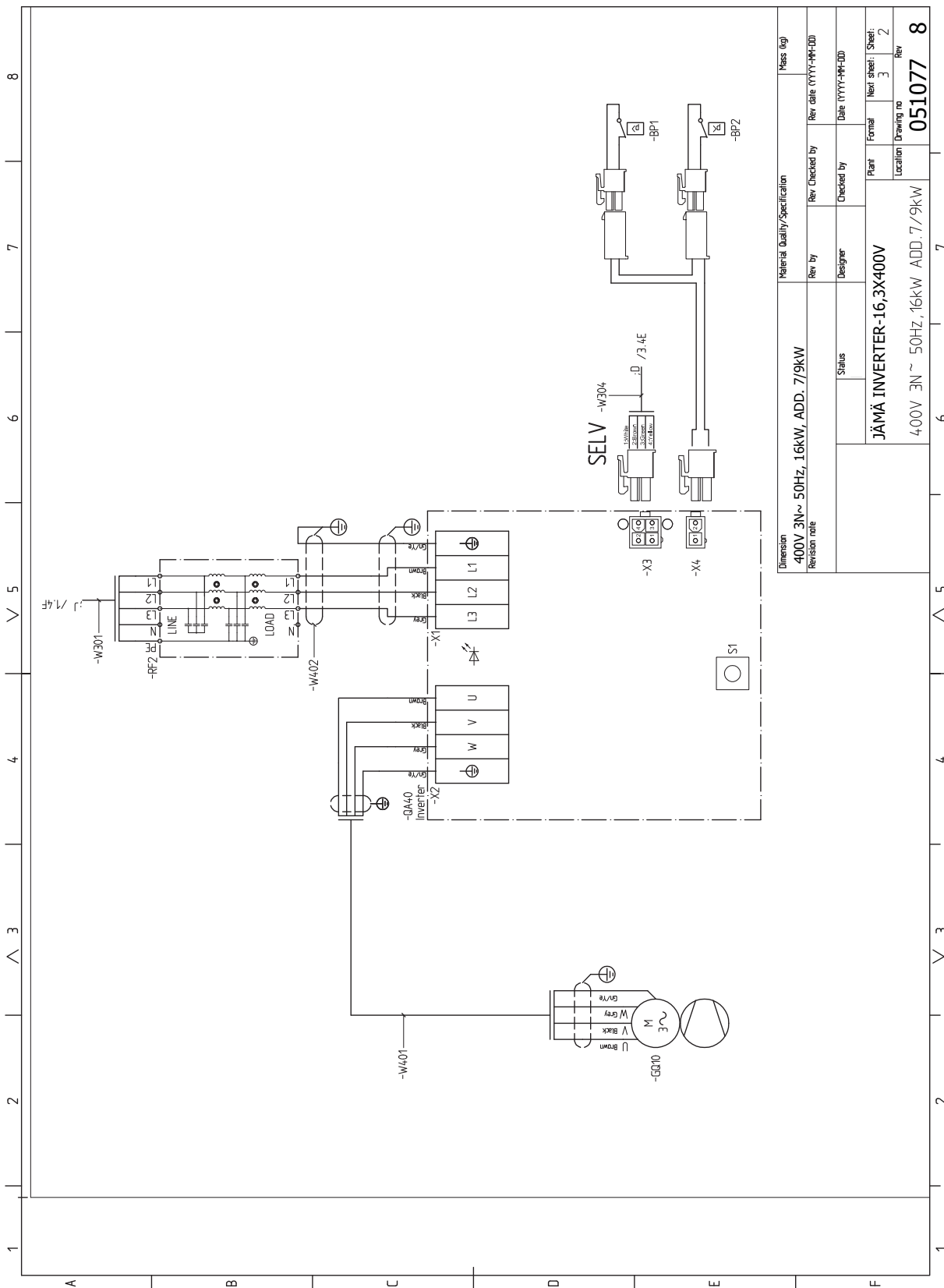
Material Quality/Specification		Mass (kg)	
Dimension	400V 3N~ 50Hz, 12kW, ADD. 7/9kW	Rev by	
Revision note		Checked by	
		Designer	
		Status	
		Plant	Next sheet: Sheet: 5
		Location	Drawing no
			051125
			Rev
			9

Revision note	
Status	
Plant	JDM1 INVERTER-12
Location	INPUT
Next sheet: Sheet:	5
Drawing no	051125
Rev	9

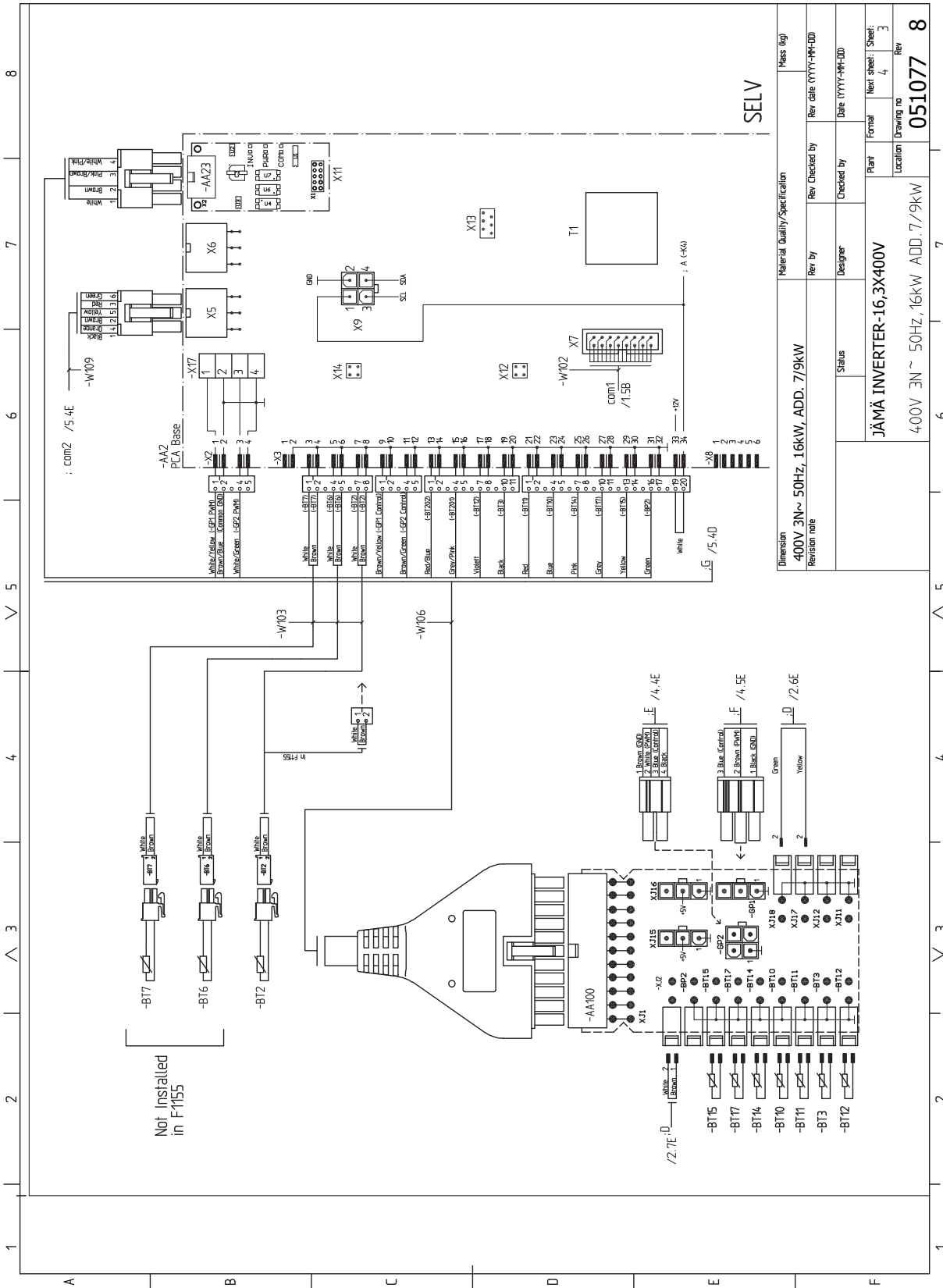


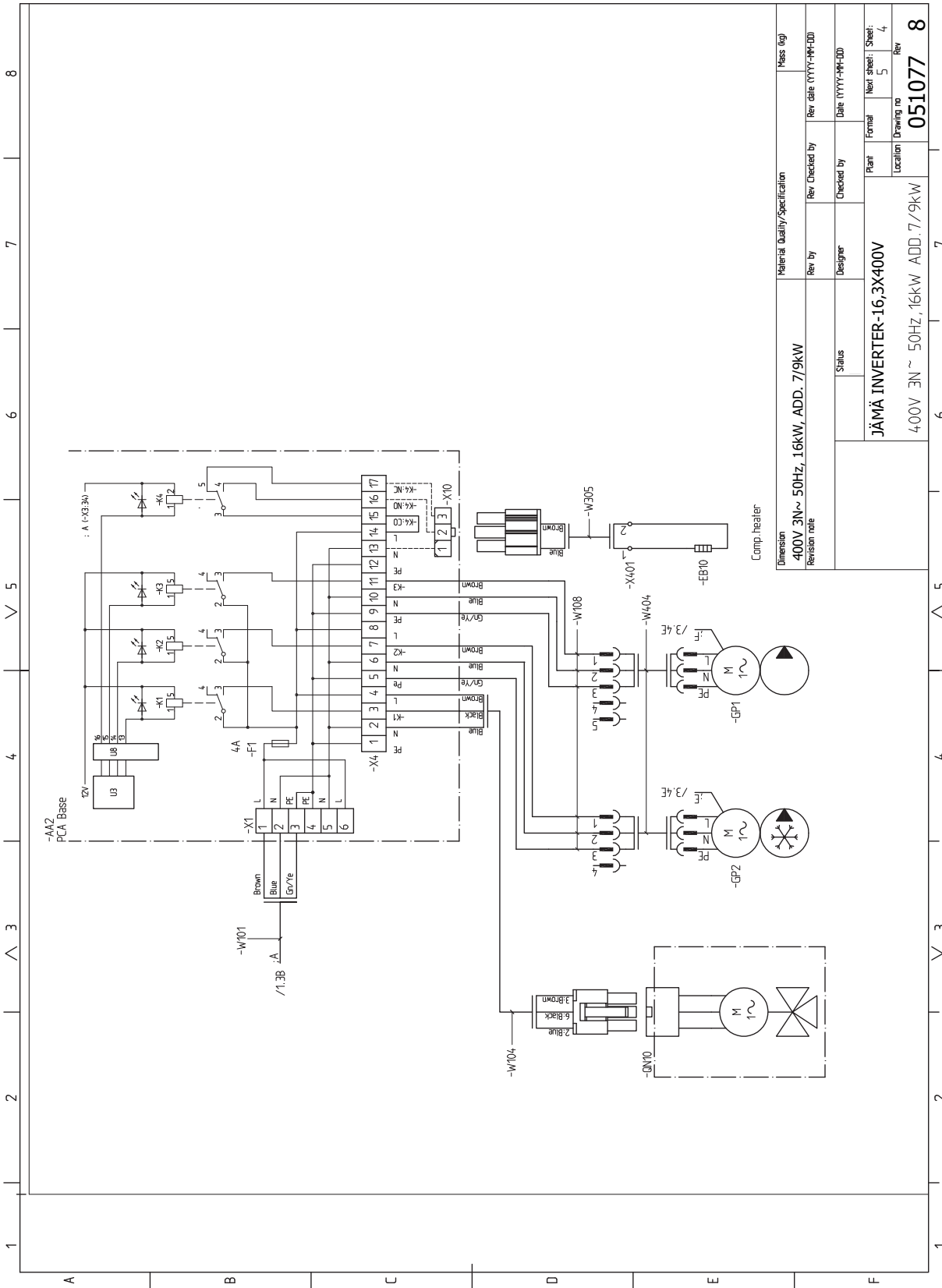
3x400V 16 kW (STAR Inverter/STAR RST Inverter)



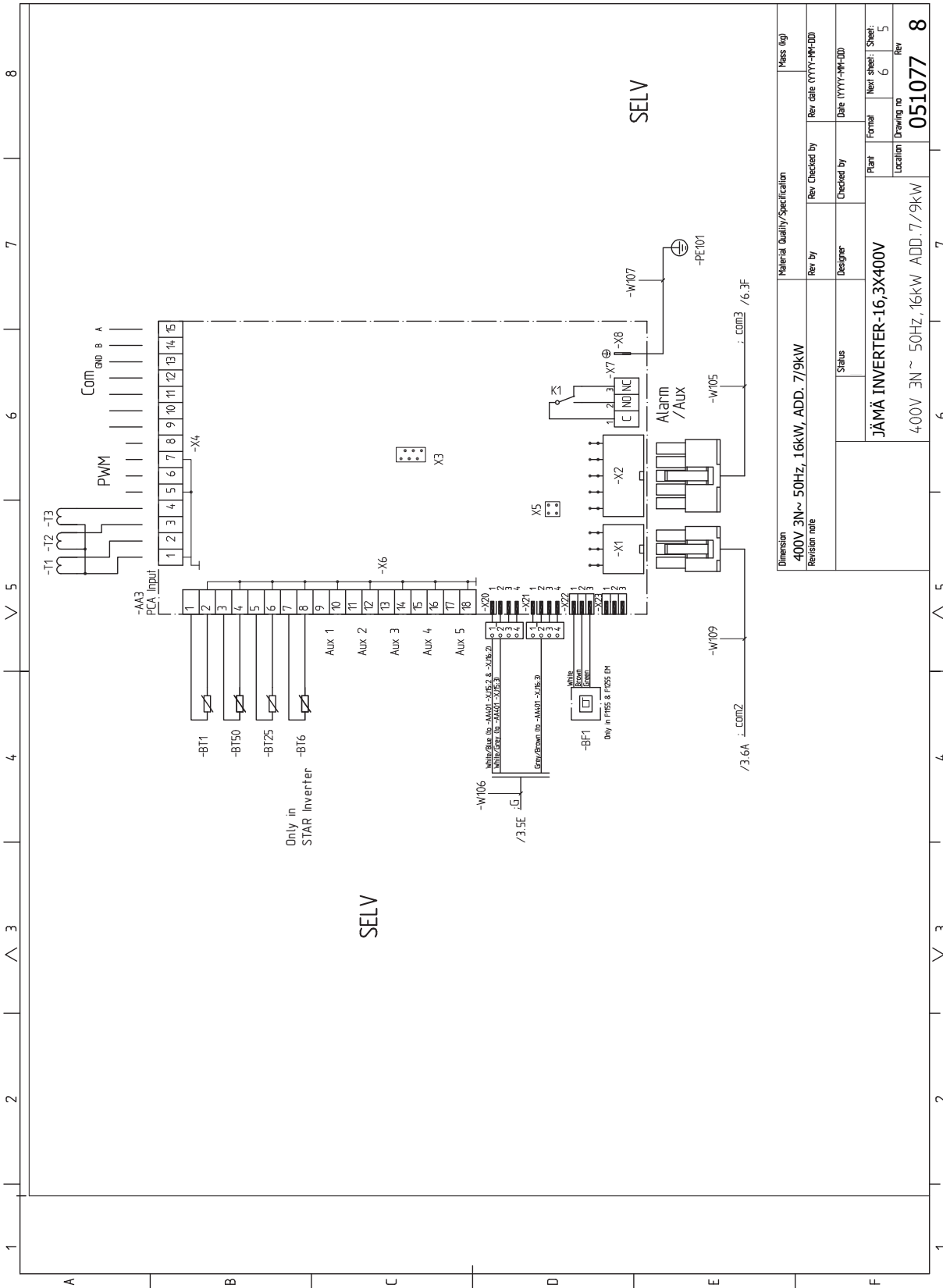


Dimension		Material Quality/Specification		Mass (kg)	
400V 3N~ 50Hz, 16kW, ADD. 7/9kW					
Revision note		Rev by	Rev Checked by	Rev date (YYYY-MM-DD)	
		Designer	Checked by	Date (YYYY-MM-DD)	
		Status	Plant	Formal	Next sheet: Sheet:
			JÄMÄ INVERTER-16,3X400V	3	2
			400V 3N ~ 50Hz, 16kW ADD. 7/9kW	Location	Drawing no
					051077
					8



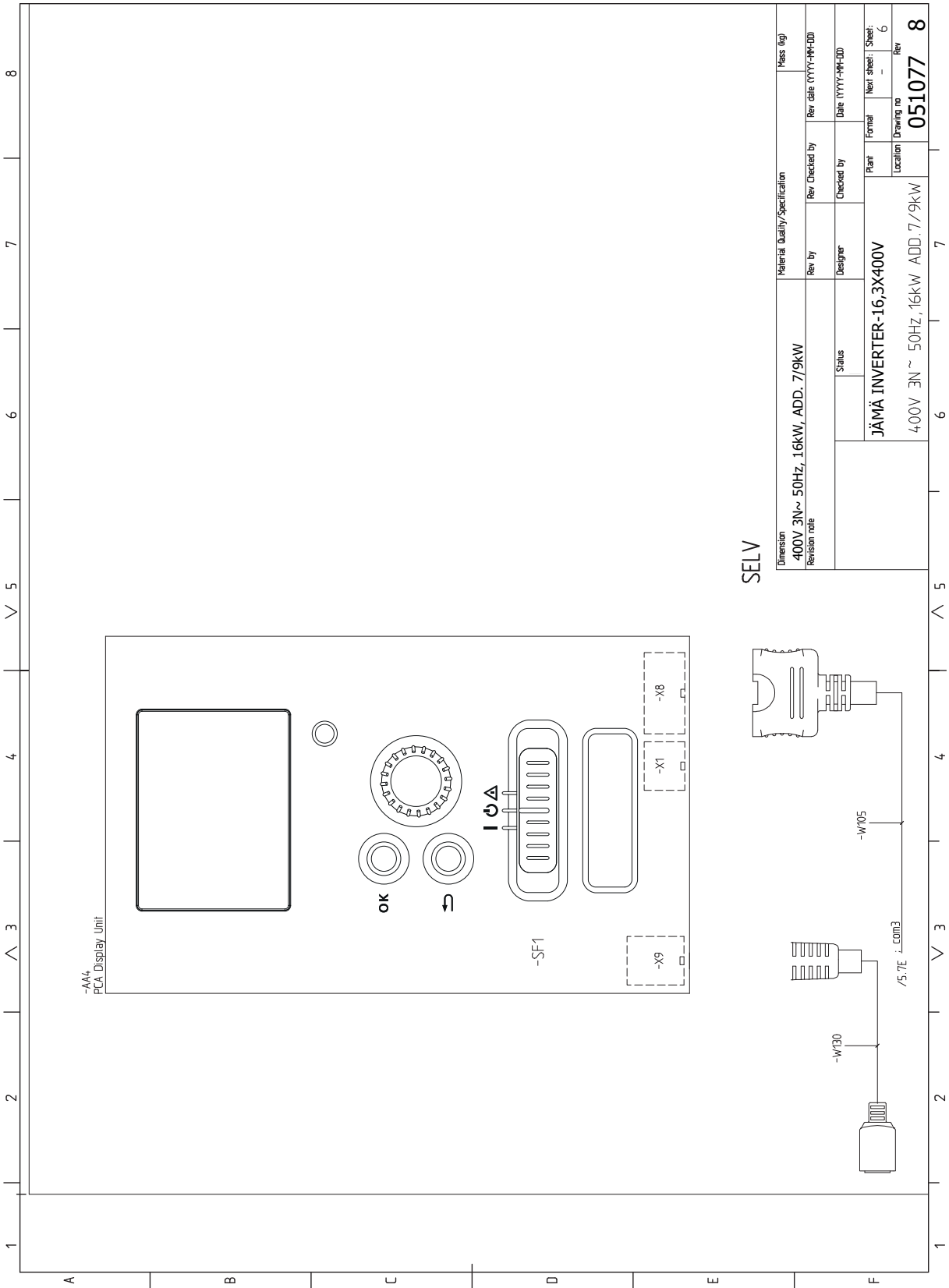


Material Quality/Specification		Mass (kg)	
400V 3N~ 50Hz, 16kW, ADD. 7/9kW	Rev by	Rev Checked by	Rev date (YYYY-MM-DD)
Revision note	Designer	Checked by	Date (YYYY-MM-DD)
Status		Plant	Formal
JÄMÄ INVERTER-16,3X400V		Location	Next sheet: Sheet: 4
400V 3N ~ 50Hz, 16kW ADD. 7/9kW		Location	Drawing no
			Rev
			051077
			8



Material Quality/Specification		Mass (kg)	
Dimension	400V 3N~ 50Hz, 16kW, ADD. 7/9kW	Rev by	
Revision note		Checked by	
		Designer	
		Status	
JÄMÄ INVERTER-16,3X400V 400V 3N~ 50Hz, 16kW ADD. 7/9kW		Plant	Next sheet: Sheet: 5
		Location	Drawing no
			Rev

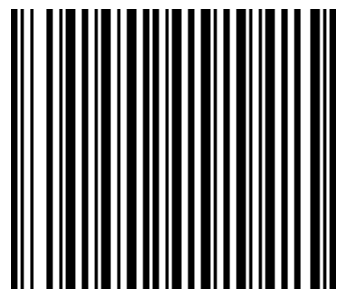
051077
8



SELV

Dimension		Material Quality/Specification		Mass (kg)
400V 3N~ 50Hz, 16kW, ADD. 7/9kW		Rev by	Rev Checked by	Rev date (YYYY-MM-DD)
Revision note		Designer	Checked by	Date (YYYY-MM-DD)
		Status	Plant	Next sheet: Sheet: 6
		JÄMÄ INVERTER-16,3X400V	Location	Drawing no
		400V 3N ~ 50Hz, 16kW ADD. 7/9kW		051077
				Rev 8

Kaukora Oy
PL 21, Tuotekatu 11
212 01 Raisio
+358 2 437 4600
E-mail: kaukora@kaukora
www.kaukora.fi



331366